



# **Baylor Scott & White Health Community Health Needs Assessment**

## **Williamson/Travis/Hays Counties Health Community**

**Baylor Scott & White Medical Center - Round Rock (including  
Baylor Scott & White Medical Center - Lakeway)**

**Baylor Scott & White Institute for Rehabilitation - Lakeway**

**Baylor Scott & White Medical Center - Taylor**

**Baylor Scott & White Emergency Medical Center - Cedar Park**

**Baylor Scott & White Medical Centers – Pflugerville**

*Approved by: Baylor Scott & White Health – Central Texas Operating, Policy and Procedure Board on May 17, 2019 and  
Baylor Scott & White Health – North Texas Operating, Policy and Procedure Board on June 25, 2019  
Posted to [BSWHealth.com/CommunityNeeds](https://www.bswhealth.com/CommunityNeeds) on June 30, 2019*

---

## Table of Contents

<b><i>Baylor Scott &amp; White Health Mission Statement</i></b> .....	<b>4</b>
<b><i>Executive Summary</i></b> .....	<b>6</b>
<b><i>Community Health Needs Assessment Requirement</i></b> .....	<b>8</b>
<b><i>CHNA Overview, Methodology and Approach</i></b> .....	<b>9</b>
<b>Consultant Qualifications &amp; Collaboration</b> .....	<b>9</b>
<b>Collaboration</b> .....	<b>9</b>
<b>Community Served Definition</b> .....	<b>10</b>
<b>Assessment of Health Needs</b> .....	<b>11</b>
<b>Quantitative Assessment of Health Needs – Methodology and Data Sources</b> .....	<b>11</b>
<b>Qualitative Assessment of Health Needs and Community Input – Approach</b> .....	<b>12</b>
<b>Methodology for Defining Community Need</b> .....	<b>16</b>
<b>Information Gaps</b> .....	<b>16</b>
<b>Approach to Identify and Prioritize Significant Health Needs</b> .....	<b>17</b>
<b>Existing Resources to Address Health Needs</b> .....	<b>18</b>
<b><i>Williamson/Travis/Hays Counties Health Community CHNA</i></b> .....	<b>19</b>
<b>Demographic and Socioeconomic Summary</b> .....	<b>19</b>
<b>Public Health Indicators</b> .....	<b>28</b>
<b>Watson Health Community Data</b> .....	<b>28</b>
<b>Focus Groups &amp; Interviews</b> .....	<b>28</b>
<b>Community Health Needs Identified</b> .....	<b>30</b>
<b>Prioritized Significant Health Needs</b> .....	<b>31</b>
<b>Description of Health Needs</b> .....	<b>32</b>
Primary Care Physician Providers .....	<b>32</b>
Non-Physician Primary Care Providers .....	<b>33</b>
Accidental Poisoning Deaths: Opioids Involvement .....	<b>33</b>
Intentional Self Harm: Suicide .....	<b>34</b>
Severe Housing Problems .....	<b>34</b>
<b>Summary</b> .....	<b>35</b>
<b><i>Appendix A: Key Health Indicator Sources</i></b> .....	<b>36</b>
<b><i>Appendix B: Community Resources Identified to Potentially Address Significant Health Needs</i></b> .....	<b>41</b>
<b>Resources Identified</b> .....	<b>41</b>
<b>Community Healthcare Facilities</b> .....	<b>59</b>
<b><i>Appendix C: Federally Designated Health Professional Shortage Areas and Medically Underserved Areas and Populations</i></b> .....	<b>64</b>

**Appendix D: Public Health Indicators Showing Greater Need When Compared to State Benchmark..... 66**  
**Appendix E: Watson Health Community Data ..... 68**  
**Appendix F: Evaluation of Prior Implementation Strategy Impact..... 72**

## **Baylor Scott & White Health Mission Statement**

---

### **Our Mission**

Founded as a Christian ministry of healing, Baylor Scott & White Health promotes the well-being of all individuals, families and communities.

### **Our Ambition**

To be the trusted leader, educator and innovator in value-based care delivery, customer experience and affordability.

### **Our Values**

- We serve faithfully
- We act honestly
- We never settle
- We are in it together

### **Our Strategies**

- Health – Transform into an integrated network that ambitiously and consistently provides exceptional quality care
- Experience – Achieve the market-leading brand by empowering our people to design and deliver a customer-for-life experience
- Affordability – Continuously improve our cost discipline to invest in our Mission and reduce the financial burden on our customers
- Alignment – Ensure consistent results through a streamlined leadership approach and unified operating model
- Growth – Pursue sustainable growth initiatives that support our Mission, Ambition, and Strategy

## **WHO WE ARE**

As the largest not-for-profit healthcare system in Texas and one of the largest in the United States, Baylor Scott & White Health was born from the 2013 combination of Baylor Health Care System and Scott & White Healthcare. Today, Baylor Scott & White includes 50 hospitals, more than 900 patient care sites, more than 7,500 active physicians, and over 47,000 employees and the Scott & White Health Plan.



## Executive Summary

---

As the largest not-for-profit health care system in Texas, Baylor Scott & White Health (BSWH) understands the importance of serving the health needs of its communities. In order to do that successfully, we must first take a comprehensive look at the systemic and local issues our patients, their families and neighbors face when it comes to having the best possible health outcomes and well-being.

Beginning in June of 2018, a BSWH task force led by the Community Health, Tax Services, and Marketing Research departments began the process of assessing the current health needs of the communities served for all BSWH hospital facilities. IBM Watson Health (formerly known as Truven Health Analytics) was engaged to help collect and analyze the data for this process and to compile a final report made publicly available in June of 2019.

BSWH owns and operates multiple individual licensed hospital facilities serving the residents of north and central Texas. Five hospitals with overlapping communities have collaborated to conduct this joint community health needs assessment. This joint community health needs assessment applies to the following BSWH hospital facilities:

- Baylor Scott & White Medical Center - Round Rock
- Baylor Scott & White Institute for Rehabilitation - Lakeway
- Baylor Scott & White Medical Center - Taylor
- Baylor Scott & White Emergency Medical Center - Cedar Park
- Baylor Scott & White Medical Center - Pflugerville

For the 2019 assessment, the community served by these hospitals includes Williamson, Travis, and Hays counties. Baylor Scott & White has at least one hospital facility or provider based clinic in each of these counties and together they comprise where more than 80% of the hospitals admitted patients live. These hospital facilities collaborated to conduct a joint CHNA report in accordance with Treasury Regulations and 501(r) of the Internal Revenue Code. All the collaborating hospital facilities included in this joint CHNA report define their community, for purposes of the CHNA report, to be the same.

Hospital facilities and IBM Watson Health (Watson Health) examined over 102 public health indicators and conducted a benchmark analysis of the data comparing the community to overall State of Texas and United States (U.S.) values. For a qualitative analysis, and in order to get input directly from the community, focus groups and key informant interviews were conducted. Interviews included input from state, local, or regional governmental public health departments (or equivalent department or agency) with knowledge, information, or expertise relevant to the health needs of the community as well as individuals or organizations serving and/or representing the interests of medically underserved, low-income, and minority populations in the community.

Needs were first identified when an indicator for the community served was worse than the Texas state benchmark. A need differential analysis conducted on all the low performing indicators determined relative severity by using the percent difference from benchmark. The outcome of this quantitative analysis aligned with the qualitative findings

of the community input sessions to create a list of health needs in the community. Each health need received assignment into one of four quadrants in a health needs matrix, this clarified the assignment of severity rankings of the needs. The matrix shows the convergence of needs identified in the qualitative data (interview and focus group feedback) and quantitative data (health indicators) and identifies the top health needs for this community.

Hospital clinical leadership and/or other invited community leaders reviewed the top health needs in a meeting to select and prioritize the list of significant needs in this health community. The meeting, moderated by Watson Health, included an overview of the CHNA process for BSWH, the methodology for determining the top health needs, the BSWH prioritization approach, and discussion of the top health needs identified for the community.

Participants identified the significant health needs through review of data driven criteria for the top health needs, discussion, and a multi-voting process. Once the significant health needs were established, participants rated the needs using prioritization criteria recommended by the focus groups. The sum of the criteria scores for each need created an overall score that was the basis of the prioritized order of significant health needs. The resulting prioritized health needs for this community include:

Priority	Need	Category of Need
1	Access to PCP	Access to Care
2	Accidental Poisoning Deaths Where Opioids Were Involved	Health Behaviors - Substance Abuse
3	Ratio of Population to One Non-Physician Primary Care Provider	Access to Care
4	Intentional Self-Harm; Suicide	Mental Health
5	Severe Housing Problems	Environment - Housing

As part of the assessment process, community resources were identified, including facilities/organizations, that may be available to address the significant needs in the community. These resources are located in the appendix of this report and will be included in the formal implementation strategy to address needs identified in this assessment, approved and made publicly available by the 15<sup>th</sup> day of the 5<sup>th</sup> month following the end of the tax year.

An evaluation of the impact and effectiveness of interventions and activities outlined in the implementation strategy drafted after the 2016 assessment is also included in **Appendix F** of this document.

The prioritized list of significant health needs approved by the hospitals' governing body and the full assessment is available to anyone at no cost. To download a copy, visit **[BSWHealth.com/CommunityNeeds](http://BSWHealth.com/CommunityNeeds)** .

This assessment and corresponding implementation strategy meet the requirements for community benefit planning and reporting as set forth in state and federal laws, including

but not limited to: Texas Health and Safety Code Chapter 311 and Internal Revenue Code Section 501(r). A report of CHNA compliance is on the IRS Form 990, Schedule H.

### **Community Health Needs Assessment Requirement**

---

As a result of the Patient Protection and Affordable Care Act (PPACA), all tax-exempt organizations operating hospital facilities are required to assess the health needs of their community through a Community Health Needs Assessment (CHNA) once every three years.

The written CHNA Report must include descriptions of the following:

- The community served and how the community was determined
- The process and methods used to conduct the assessment including sources and dates of the data and other information as well as the analytical methods applied to identify significant community health needs
- How the organization took into account input from persons representing the broad interests of the community served by the hospital, including a description of when and how the hospital consulted with these persons or the organizations they represent
- The prioritized significant health needs identified through the CHNA as well as a description of the process and criteria used in prioritizing the identified significant needs
- The existing healthcare facilities, organizations, and other resources within the community available to meet the significant community health needs
- An evaluation of the impact of any actions that were taken, since the hospital facility(s) most recent CHNA, to address the significant health needs identified in that last CHNA

PPACA also requires hospitals to adopt an Implementation Strategy to address prioritized community health needs identified through the assessment. An Implementation Strategy is a written plan that addresses each of the significant community health needs identified through the CHNA and is a separate but related document to the CHNA report.

The written Implementation Strategy must include the following:

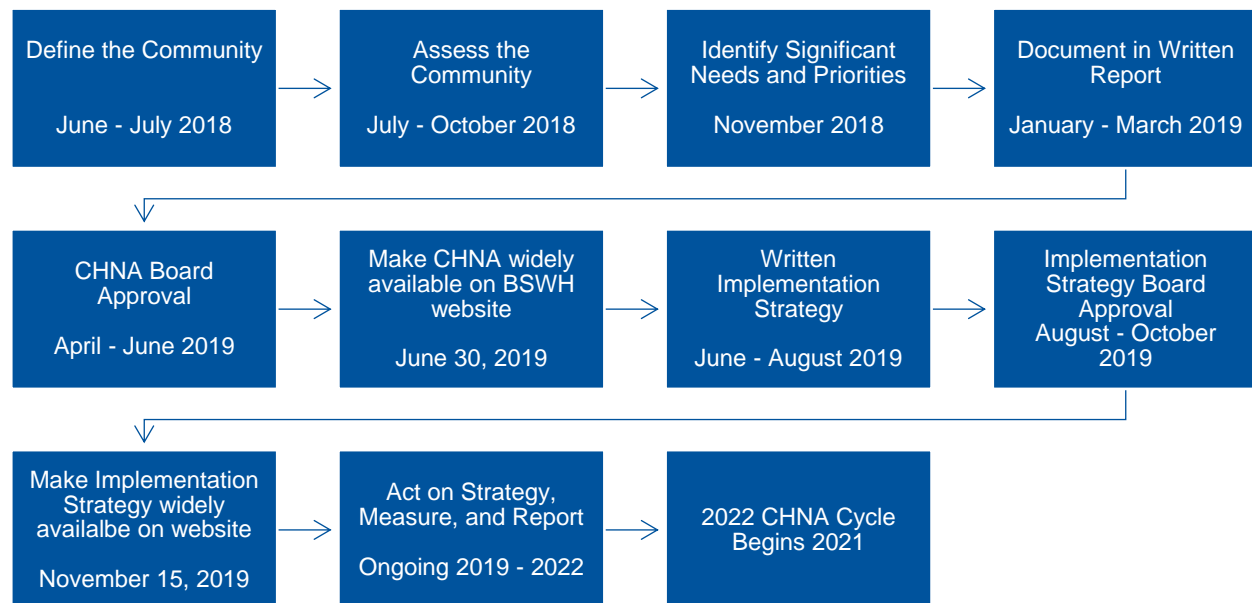
- List of the prioritized needs the hospital plans to address and the rationale for not addressing other significant health needs identified
- Actions the hospital intends to take to address the chosen health needs
- The anticipated impact of these actions and the plan to evaluate such impact (e.g. identify data sources that will be used to track the plan's impact)
- Identify programs and resources the hospital plans to commit to address the health needs
- Describe any planned collaboration between the hospital and other facilities or organizations in addressing the health needs



## CHNA Overview, Methodology and Approach

---

BSHW began the 2019 CHNA process in June of 2018; the following is an overview of the timeline and major milestones.



BSWH partnered with Watson Health to complete a CHNA for qualifying BSWH hospital facilities.

### *Consultant Qualifications & Collaboration*

Watson Health delivers analytic tools, benchmarks, and strategic consulting services to the healthcare industry, combining rich data analytics in demographics, including the Community Needs Index, planning, and disease prevalence estimates, with experienced strategic consultants to deliver comprehensive and actionable Community Health Needs Assessments.

### *Collaboration*

BSWH owns and operates multiple individually licensed hospital facilities serving the residents of north and central Texas. Five hospital facilities with overlapping communities have collaborated to conduct this joint community health needs assessment. This joint community health needs assessment applies to the following BSWH hospital facilities:

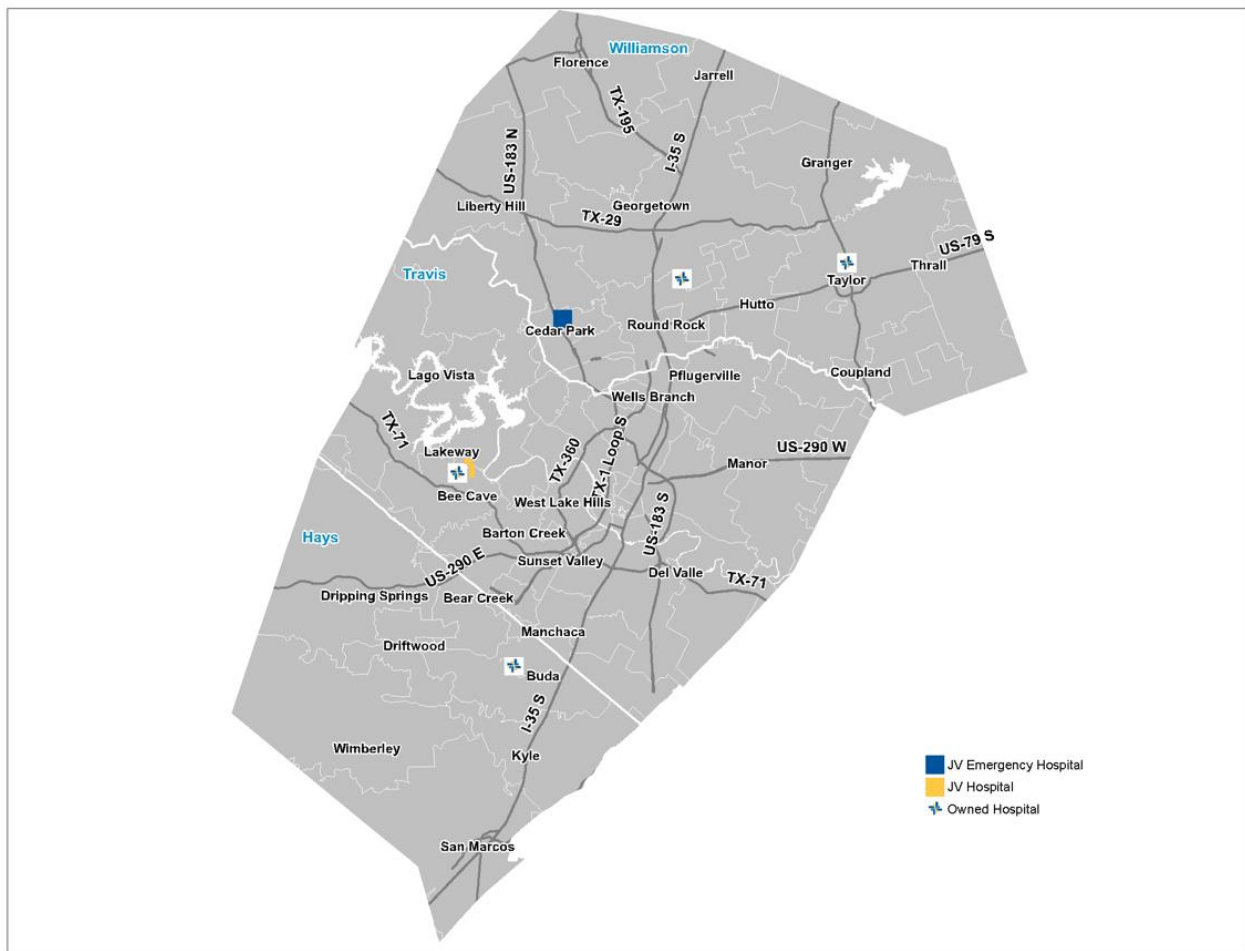
- Baylor Scott & White Medical Center - Round Rock (including Baylor Scott & White Medical Center - Lakeway)
- Baylor Scott & White Institute for Rehabilitation - Lakeway
- Baylor Scott & White Medical Center - Taylor
- Baylor Scott & White Emergency Medical Center - Cedar Park

- Baylor Scott & White Medical Center - Pflugerville

*Community Served Definition*

The community served by these hospitals includes Williamson, Travis, and Hays counties. Baylor Scott & White has at least one hospital facility or provider based clinic in each of these counties and together they comprise where more than 80% of the hospitals' admitted patients live.

*BSWH Community Health Needs Assessment  
Williamson/Travis/Hays Counties Health Community Map*



Source: Baylor Scott & White Health, 2019

### *Assessment of Health Needs*

To identify the health needs of the community, the hospital facility established a comprehensive method of taking into account all available relevant data including community input. The basis of identification of community health needs was the weight of qualitative and quantitative data obtained when assessing the community. Surveyors conducted interviews and focus groups with individuals representing public health, community leaders/groups, public organizations, and other providers. In addition, data collected from several public sources compared to the state benchmark indicated the level of severity.

### *Quantitative Assessment of Health Needs – Methodology and Data Sources*

Quantitative data collection and analysis in the form of public health indicators assessed community health needs, including collection of 102 data elements grouped into 11 categories, and evaluated for the counties where data was available. Since 2016, the identification of several new indicators included: addressing mental health, health care costs, opioids, and social determinants of health. The categories and indicators are included in the table below, the sources are in **Appendix A**.

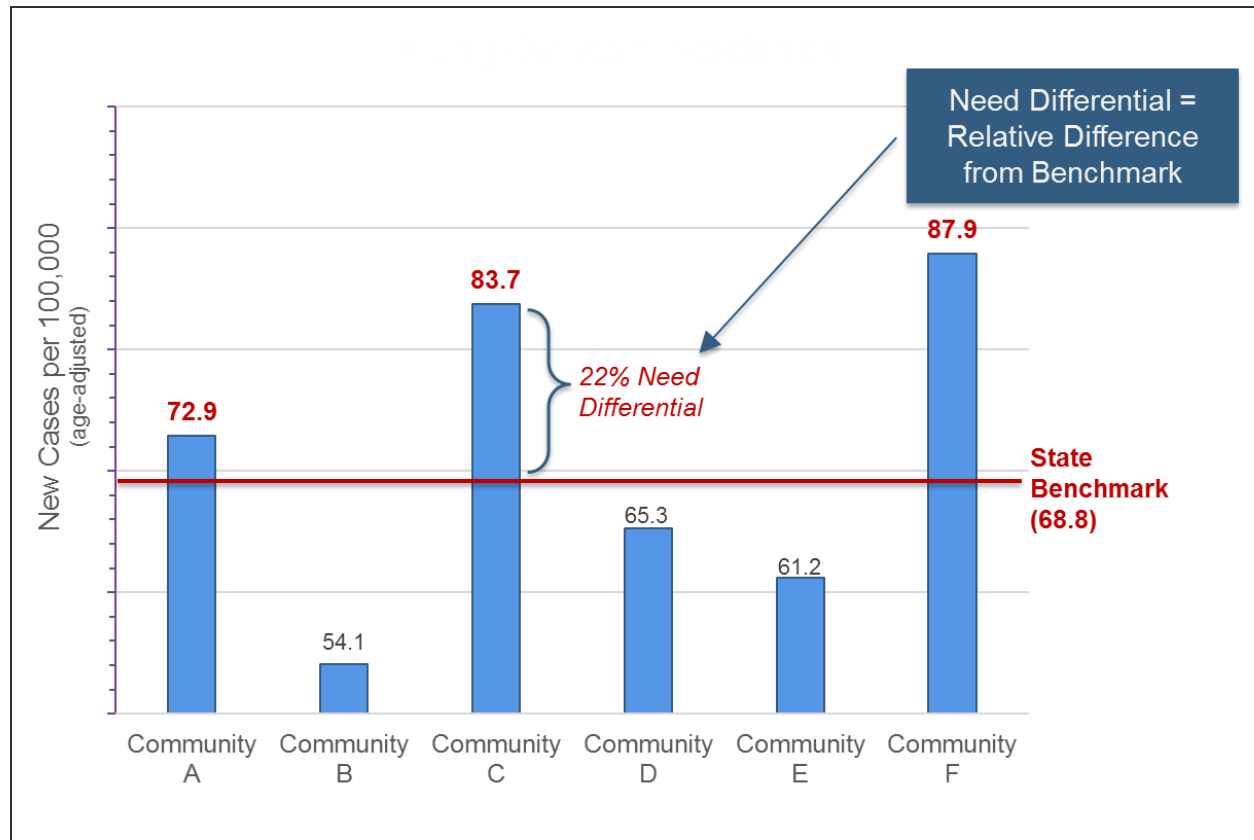
A benchmark analysis conducted for each indicator collected for the community served, determined which public health indicators demonstrated a community health need from a quantitative perspective. Benchmark health indicators collected included (when available); overall U.S. values, State of Texas values, and goal setting benchmarks such as Healthy People 2020.

According to America's Health Rankings 2018 Annual Report, Texas ranks 37<sup>th</sup> out of the 50 states. The health status of Texas compared to other states in the nation identified many opportunities to impact health within local communities, including opportunities for those communities that ranked highly. Therefore, the benchmark for the community served was set to the state value.

Once the community benchmark was set to the state value, it was determined which indicators for the community did not meet the state benchmarks. This created a subset of indicators for further analysis. A need differential analysis was conducted to understand the relative severity of need for these indicators. The need differential established a standardized way to evaluate the degree each indicator differed from its benchmark; this measure is called the need differential. Health community indicators with need differentials above the 50<sup>th</sup> percentile, ordered by severity, and the highest ranked indicators were the highest health needs from a quantitative perspective. These data are available to the community via an interactive Tableau dashboard at **[BSWHealth.com/CommunityNeeds](https://www.bswhealth.com/CommunityNeeds)** .

The outcomes of the quantitative data analysis were compared to the qualitative data findings.

### Health Indicator Benchmark Analysis Example



Source: IBM Watson Health, 2018

#### Qualitative Assessment of Health Needs and Community Input – Approach

In addition to analyzing quantitative data, three (3) focus groups with a total of 39 participants, as well as seventeen (17) key informant interviews, were conducted July through September 2018 to take into account the input of persons representing the broad interests of the community served. The focus groups and interviews solicited feedback from leaders and representatives who serve the community and have insight into community needs. Prioritization sessions were also held with hospital clinical leadership and/or other community leaders to identify significant health needs from the assessment and prioritize them.

Focus groups familiarized participants with the CHNA process and solicited input to understand health needs from the community's perspective. Focus groups, formatted for individual as well as small group feedback, helped identify barriers and social determinants influencing the community's health needs. Barriers and social determinants were new topics added to the 2019 community input sessions.

Watson Health conducted key informant interviews for the community served by the hospital facilities. The interviews aided in gaining understanding and insight into participants concerns about the general health status of the community and the various drivers that contributed to health issues.

Participation in the qualitative assessment included at least one state, local, or regional governmental public health department (or equivalent department or agency) with knowledge, information, or expertise relevant to the health needs of the community, as well as individuals or organizations who served and/or represented the interests of medically underserved, low-income and minority populations in the community.

Participation from community leaders/groups, public health organizations, other healthcare organizations, and other healthcare providers (including physicians) ensured that the input received represented the broad interests of the community served. A list of the names of organizations providing input are in the table below.

*Community Input Participants*

Participant Organization Name	Public Health	Medically Under-served	Low-income	Chronic Disease Needs	Minority Populations	Governmental Public Health Dept.	Public Health Knowledge/Expertise
Austin Child Guidance Center	X		X		X		X
Austin Clubhouse, Inc.	X	X	X	X	X		X
Baylor Scott & White Health		X	X	X	X		
Bluebonnet Trails Community Services	X	X	X	X		X	X
Cardinal 360, LLC		X					
Carebox Program	X	X	X	X	X		
Central Texas Catholic Charities	X	X	X	X	X	X	X
Central Texas Food Bank		X	X	X	X		X
Christ Fellowship Church and Interagency of EWC	X	X	X	X	X		
City of Buda							
Community Care Collaborative		X	X	X	X	X	
Community Resource Center of Texas Inc		X	X		X		X
Coordinator							
East Wilco Collaborative			X				X
East Williamson County Cooperative							
Executive Director							

Participant Organization Name	Public Health	Medically Under-served	Low-income	Chronic Disease Needs	Minority Populations	Governmental Public Health Dept.	Public Health Knowledge/Expertise
Georgetown Health Foundation			X				
Georgetown Public Library			X				
Go! Austin / Vamos! Austin (Gava)	X		X	X	X		
Greater Austin Hispanic Chamber of Commerce					X		
Hays County							
Hays County ISD							
Hays Food Bank			X				
Interagency of Eastern Wilco Board	X	X	X		X		X
Lake Travis Independent School District							
Lifepark Center			X				
Lone Star Circle of Care	X	X	X	X	X		
Manos De Cristo	X		X				X
Mobile Outreach Team Williamson County Emergency Services		X	X	X			X
Pavilion		X	X				X
People's Community Clinic		X	X				
Re: Cancer	X	X	X	X	X		
Retired			X				
Sacred Heart Clinic	X	X	X	X	X		
Seton/Ascension	X						
Shepherd's Heart Food Pantry and Community Ministries	X		X		X		X
City of Taylor							
Taylor Housing Authority			X				
Taylor Press	X						

Participant Organization Name	Public Health	Medically Under-served	Low-income	Chronic Disease Needs	Minority Populations	Governmental Public Health Dept.	Public Health Knowledge/Expertise
Texas Department of State Health Services - HSR 7	X					X	X
The Arc of The Capital Area	X	X	X		X		
The Caring Place			X		X		X
The College of Health Care Professions			X		X		
Tripp Center		X	X	X	X		X
United Seniors of Taylor			X				X
United Way of Williamson County			X				
Williamson County and Cities Health District - Pass	X	X	X			X	X
Women's Health and Family Planning Association of Texas	X	X	X		X		X

*Note: multiple persons from the same organization may have participated*

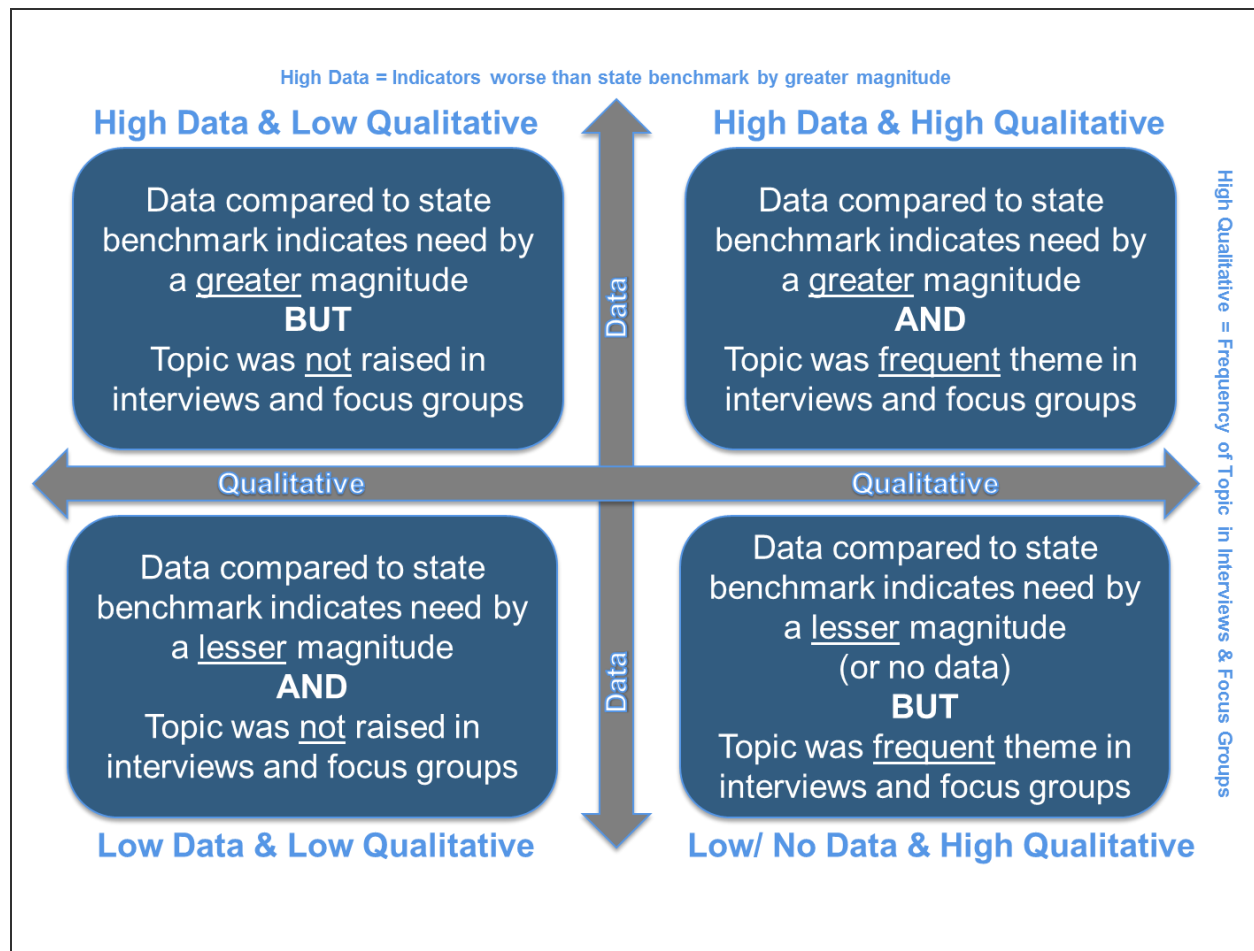
In addition to soliciting input from public health and various interests of the community, the hospital facilities were also required to consider written input received on their most recently conducted CHNA and subsequent implementation strategies. The assessment is available to receive public comment or feedback on the report findings on the BSWH website ([BSWHealth.com/CommunityNeeds](http://BSWHealth.com/CommunityNeeds) ) or by emailing [CommunityHealth@bswhealth.org](mailto:CommunityHealth@bswhealth.org). To date BSWH has not received such written input but continues to welcome feedback from the community.

Community input from interviews and focus groups organized the themes around community needs. These themes were compared to the quantitative data findings.

### Methodology for Defining Community Need

Using qualitative feedback from the interviews and focus group, as well as the health indicator data, the consolidated issues currently affecting the community served assembled in the Health Needs Matrix below help identify the health needs for each community. The upper right quadrant of the matrix is where the needs identified in the qualitative data (interview and focus group feedback) and quantitative data (health indicators) converge to identify the top health needs for this community.

*The Health Needs Matrix*



Source: IBM Watson Health, 2018

### Information Gaps

In some areas of Texas, health indicators were not available due to the impact small population size has on reporting and statistical significance. Additionally, most public health indicators were available only at the county level. In evaluating data for entire counties versus more localized data, it was difficult to understand the health needs for specific population pockets within a county. It could also be a challenge to tailor programs to address community health needs, as placement and access to specific programs in



one part of the county may or may not actually affect the population who truly need the service.

### *Approach to Identify and Prioritize Significant Health Needs*

A session was held to select and prioritize the list of significant needs on November 30, 2018; it was attended by community leaders and hospital and clinic leadership for the following facilities:

- Baylor Scott & White Medical Center - Round Rock (including Baylor Scott & White Medical Center - Lakeway)
- Baylor Scott & White Institute for Rehabilitation - Lakeway
- Baylor Scott & White Medical Center - Taylor

The meeting, moderated by Watson Health, included an overview of the CHNA process for BSWH, the methodology for determining the top health needs, the BSWH prioritization approach, and discussion of the top health needs identified for the community.

Prioritization of the health needs took place in two steps. In the first step, participants reviewed the top health needs for their community with associated data-driven criteria to evaluate. The criteria included: health indicator value(s) for the community, how the indicator compared to the state benchmark, and potentially preventable ED visit rates for the community (if available). Participants then leveraged the professional experience and community knowledge of the group via discussion about which needs were most significant. With the data-driven review criteria and the discussion completed, a multi-voting method identified the significant health needs. Participants voted individually for the five (5) needs they considered as the most significant for this community. With votes tallied, five (5) identified needs ranked as significant health needs, based on the number of votes.

In the second step, participants ranked the significant health needs based on prioritization criteria recommended by the focus groups conducted for this community:

1. Community Capacity: the community has the capacity to act on the issue, including any economic, social, cultural, or political consideration
2. Political Feasibility/Readiness/Acceptability: there is a willingness among elected officials to acknowledge the issue and a political climate that makes it feasible to address the issue
3. Vulnerable Populations: there is a high need among vulnerable populations and/or vulnerable populations are adversely impacted

Through discussion and consensus, the group rated each of the five (5) significant health needs on each of the three (3) identified criteria utilizing a scale of 1 (low) to 10 (high). The criteria scores summed for each need, created an overall score. The list of significant health needs was then prioritized based on the overall scores. The outcome of this process, the list of prioritized health needs for this community, is located in the **“Prioritized Significant Health Needs”** section of the assessment.

The prioritized list of significant health needs approved by the hospitals' governing body and the full assessment is available to anyone at no cost. To download a copy, visit **[BSWHealth.com/CommunityNeeds](https://www.bswhealth.com/CommunityNeeds)** .

#### *Existing Resources to Address Health Needs*

Part of the assessment process included gathering input on community resources potentially available to address the significant health needs identified through the CHNA. BSWH Community Resource Guides, and input from qualitative assessment participants, identified community resources that may assist in addressing the health needs identified for this community. A description of these resources is in **Appendix B**. In addition, an interactive asset map of various resources identified for all BSWH communities are at: **[BSWHealth.com/CommunityNeeds](https://www.bswhealth.com/CommunityNeeds)** .

## Williamson/Travis/Hays Counties Health Community CHNA

### Demographic and Socioeconomic Summary

According to population statistics, the community served was similar to Texas in terms of projected population growth; both outpace the Country. The median age was younger than Texas overall and younger than the United States. Median income was greater than both the state and the Country. The community served had a smaller proportion of Medicaid beneficiaries and uninsured individuals than Texas but had a greater proportion of uninsured individuals than the U.S...

#### Demographic and Socioeconomic Comparison: Community Served and State/U.S. Benchmarks

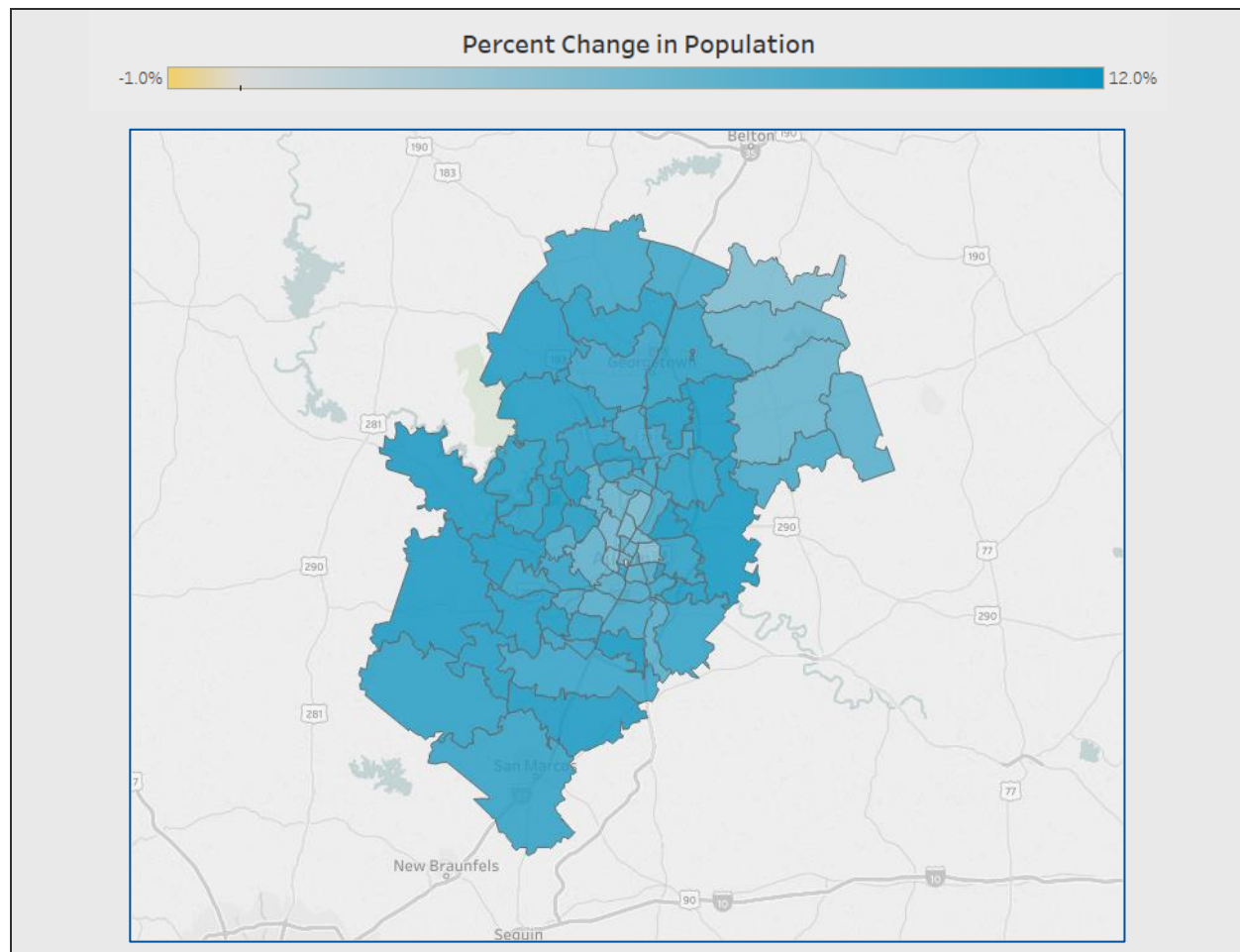
Geography	Benchmarks		Community Served	
	United States	Texas	Williamson Travis Hays Health Community	
Total Current Population	326,533,070	28,531,631	2,014,860	
5 Yr Projected Population Change	3.5%	7.1%	9.6%	
Median Age	42.0	38.9	37.1	
Population 0-17	22.6%	25.9%	24.5%	
Population 65+	15.9%	12.6%	10.9%	
Women Age 15-44	19.6%	20.6%	21.9%	
Non-White Population	30.0%	32.2%	29.2%	
Hispanic Population	18.2%	39.4%	32.3%	
Insurance Coverage	Uninsured	9.4%	19.0%	14.1%
	Medicaid	14.9%	13.4%	8.4%
	Private Market	9.6%	9.9%	11.1%
	Medicare	16.1%	12.5%	9.9%
	Employer	45.9%	45.3%	56.4%
Median HH Income	\$61,372	\$60,397	\$80,625	
Limited English	26.2%	39.9%	33.0%	
No High School Diploma	7.4%	8.7%	4.9%	
Unemployed	6.8%	5.9%	4.7%	

Source: IBM Watson Health / Claritas, 2018; US Census Bureau 2017 (U.S. Median Income)

The population of the community served is expected to grow 9.6% by 2023, an increase of more than 190,000 people. The 9.6% projected population growth is higher than the state's 5-year projected growth rate (7.1%) and higher compared to the national projected growth rate (3.5%). The ZIP codes expected to experience the most growth in five years are:

- 78660 Pflugerville – 10,592 people
- 78613 Leander-Cedar Park – 8,923 people

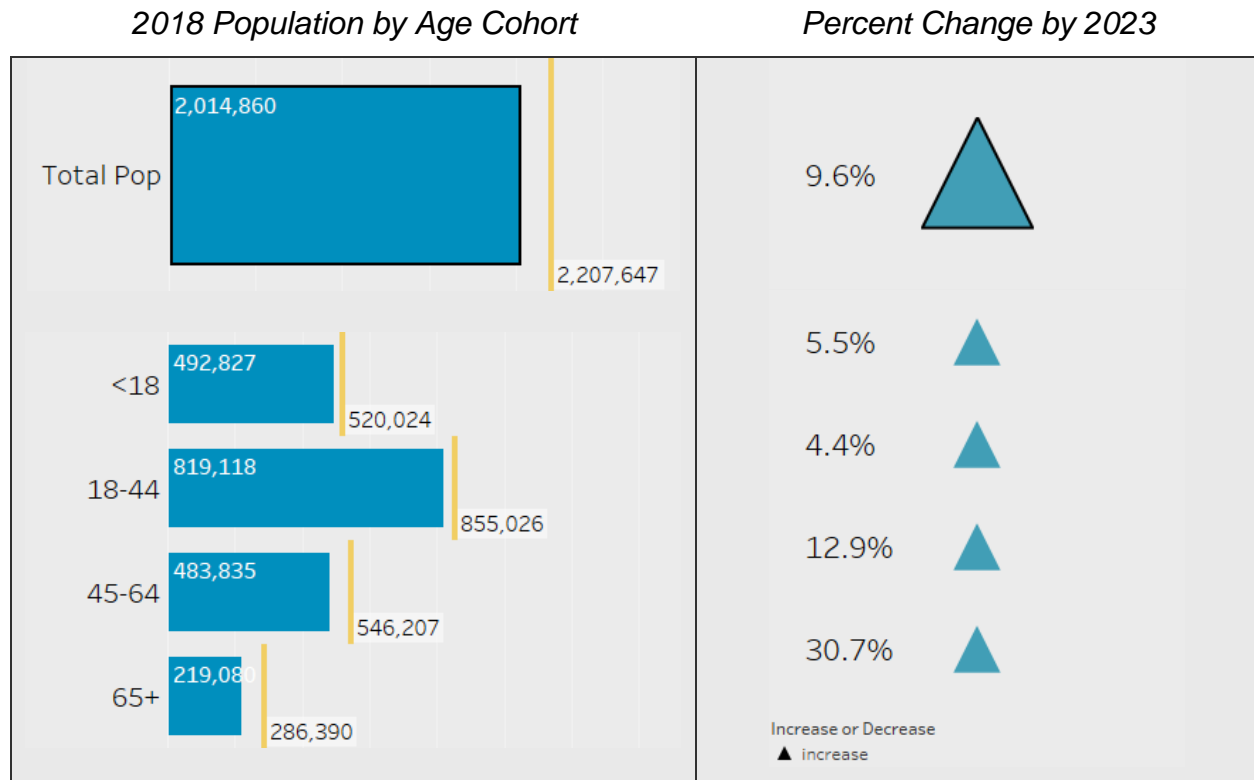
### 2018 - 2023 Total Population Projected Change by ZIP Code



Source: IBM Watson Health / Claritas, 2018

The community's population skewed younger with 40.7% of the population ages 18-44 and 24.5% under age 18. The largest cohort (18-44) was the largest and is expected to grow by 35,908 people by 2023. Meanwhile, the age 65 plus cohort was the smallest, but is expected to experience the fastest growth (30.7%) over the next five years, adding 67,310 seniors to the community. Growth in the senior population will likely contribute to increased utilization of services as the population continues to age.

### Population Distribution by Age

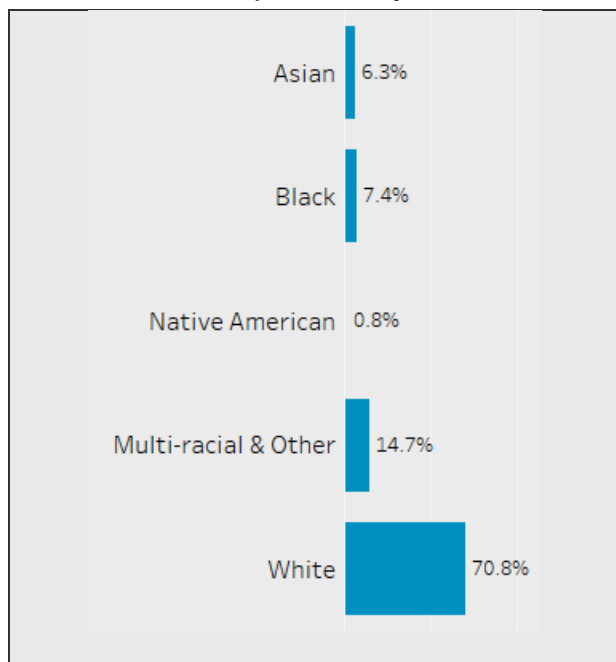


Source: IBM Watson Health / Claritas, 2018

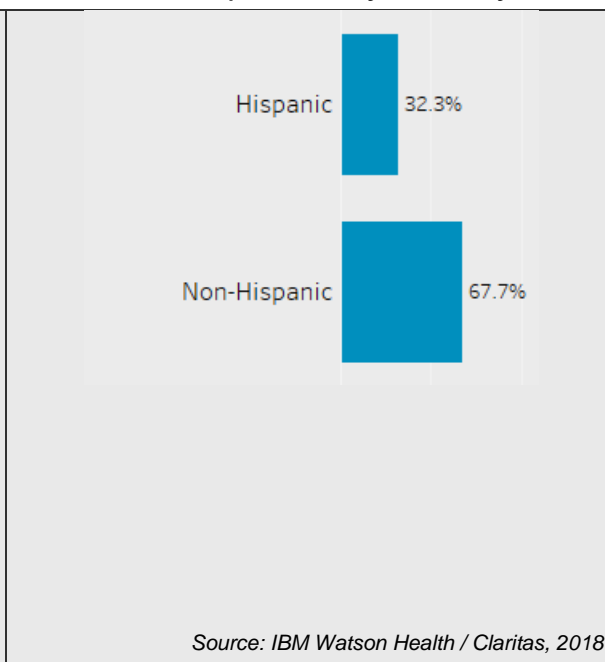
Population statistics can be analyzed by race and by Hispanic ethnicity. The community was primarily white and non-Hispanic, and this is expected to change over the next five years due to projected growth of minority populations. The expected growth rate of the Hispanic population (all races) is over 79,000 people (12.2%) by 2023. The non-Hispanic white population is expected to have the slowest growth (5.8%) while the non-Hispanic black, Asian/Pacific Islander, multi-racial, and American Indian/Native American populations are expected to experience a total growth of 16.8% or 53,109 people in the next five years.

*Population Distribution by Race and Ethnicity*

*2018 Population by Race*

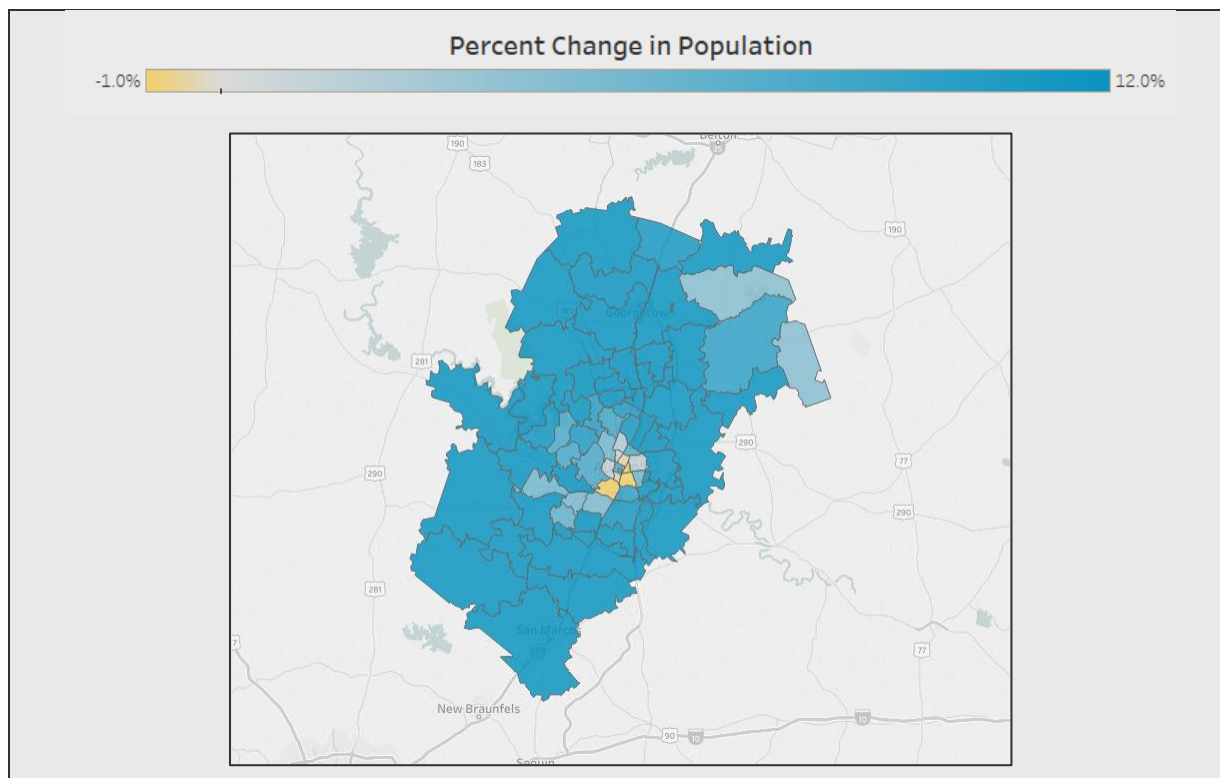


*2018 Population by Ethnicity*



Source: IBM Watson Health / Claritas, 2018

*2018 - 2023 Hispanic Population Projected Change by ZIP Code*

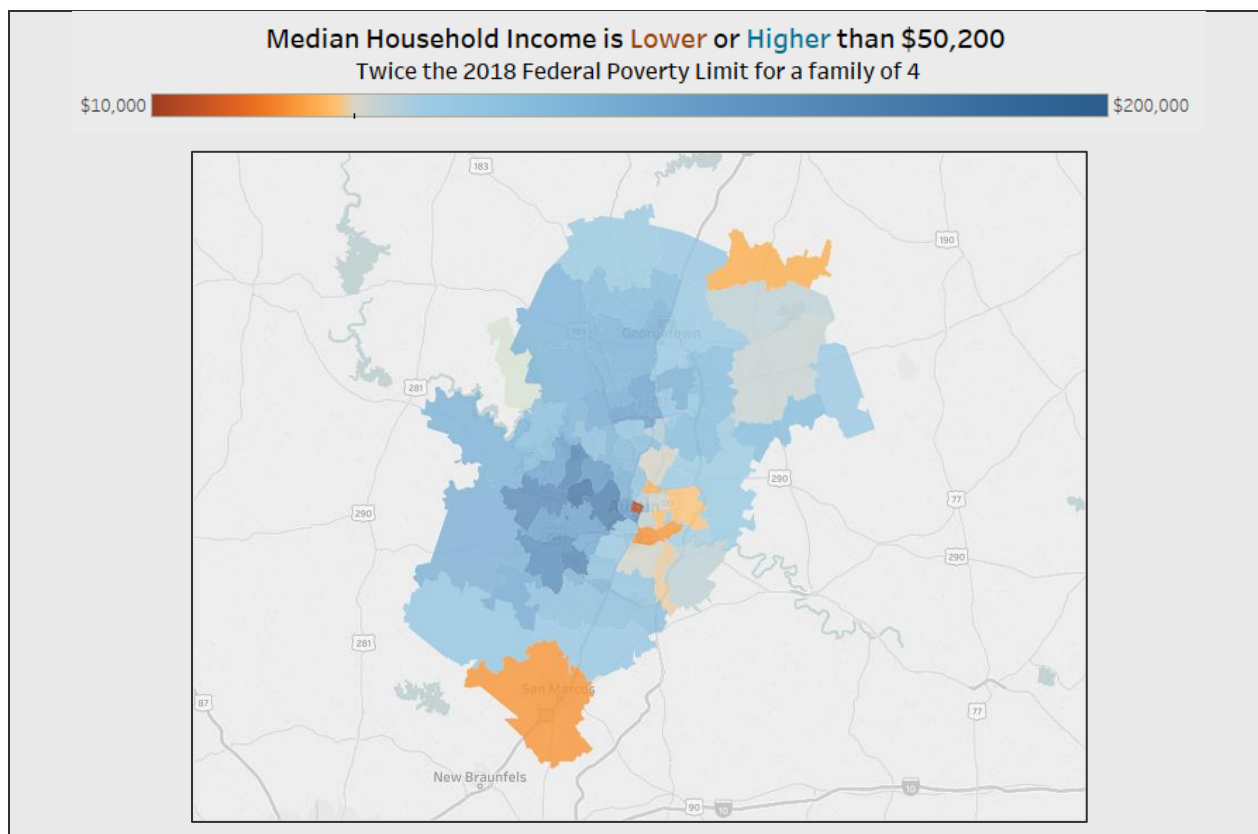


Source: IBM Watson Health / Claritas, 2018

The 2018 median household income for the United States was \$61,372 and \$60,397 for the state of Texas. The median household income for the ZIP codes within this community ranged from \$14,318 for 78712 - University of Texas to \$164,276 for 78733 - Bee Cave-Lakeway. There were ten (10) ZIP codes with median household incomes less than \$50,200 – twice the 2018 Federal Poverty Limit for a family of four.

- 78719 ABIA-Del Valle - \$48,400
- 78724 Manor - \$46,829
- 78721 East Central Austin - \$46,255
- 78752 North Austin - \$43,303
- 76511 Bartlett - \$42,500
- 78742 SE Austin - \$38,409
- 78666 San Marcos - \$37,681
- 78741 SE Austin - \$37,190
- 78705 University of TX - \$16,862
- 78712 University of TX - \$14,318

### 2018 Median Household Income by ZIP Code

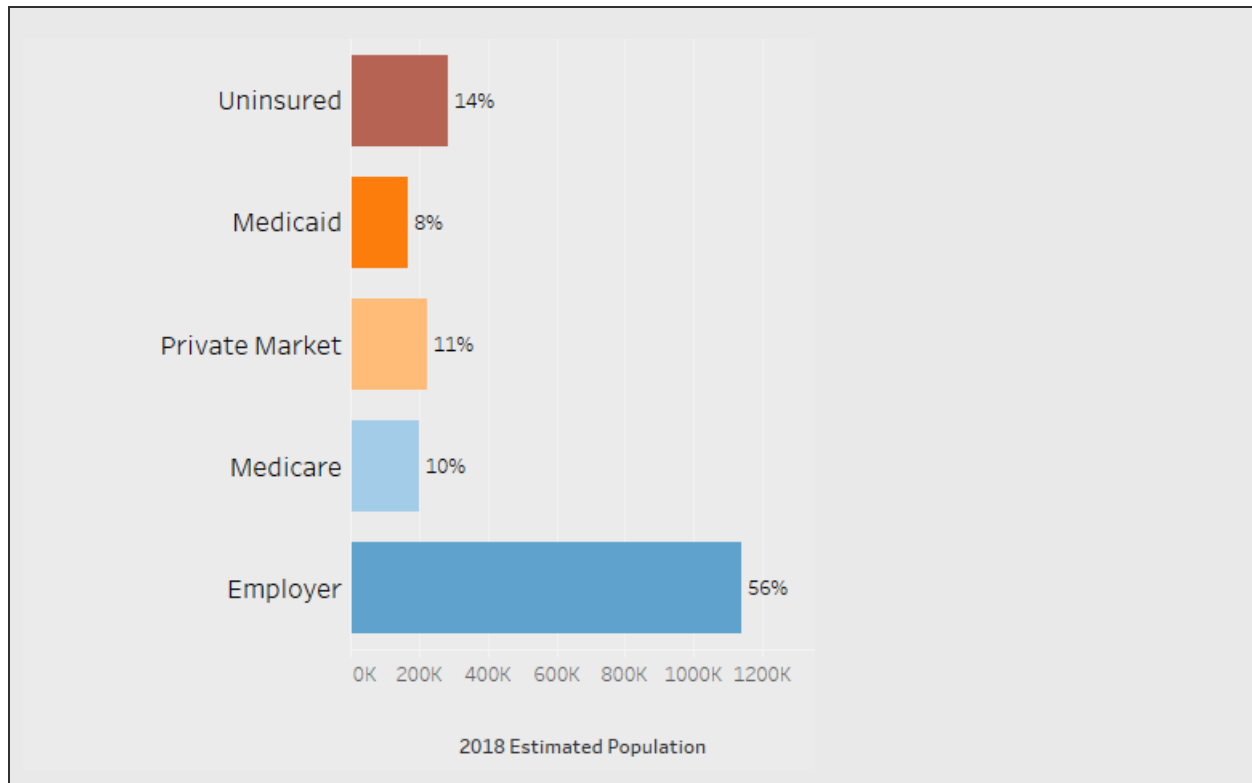


Source: IBM Watson Health / Claritas, 2018



A majority of the population (56%) were insured through employer sponsored health coverage, while a small population remained without health insurance (14%). The remainder of the population was fairly equally divided between Medicaid, Medicare, and private market (the purchasers of coverage directly or through the health insurance marketplace).

*2018 Estimated Distribution of Covered Lives by Insurance Category*



Source: IBM Watson Health / Claritas, 2018

The community includes fourteen (14) Health Professional Shortage Areas and three (3) Medically Underserved Areas as designated by the U.S. Department of Health and Human Services Health Resources Services Administration.<sup>1</sup> **Appendix C** includes the details on each of these designations.

<sup>1</sup> U.S. Department of Health and Human Services, Health Resources and Services Administration, 2018



*Health Professional Shortage Areas and Medically Underserved Areas and Populations*

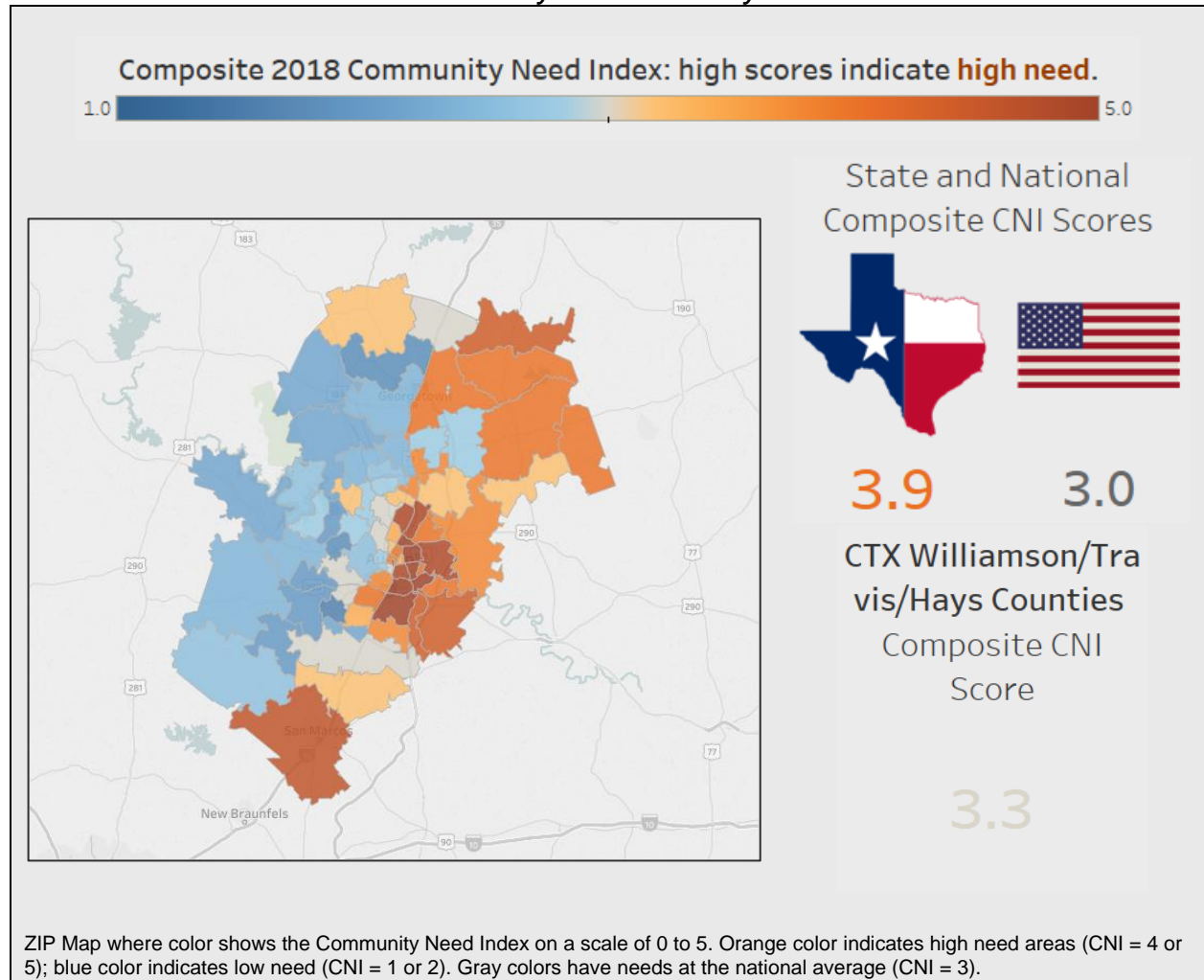
CTX Williamson/Travis/Hays Counties Health Community	Health Professional Shortage Areas (HPSA)			Grand Total	Medically Underserved Area/Population (MUA/P)
	Dental Health	Mental Health	Primary Care		MUA/P
Hays	0	0	1	1	1
Travis	2	3	2	7	1
Williamson	2	2	2	6	1
<b>Total</b>	<b>4</b>	<b>5</b>	<b>5</b>	<b>14</b>	<b>3</b>

Source: U.S. Department of Health and Human Services, Health Resources and Services Administration, 2018

The Watson Health Community Need Index (CNI) is a statistical approach to identifying areas within a community where health disparities may exist. The CNI takes into account vital socio-economic factors (income, cultural, education, insurance and housing) about a community to generate a CNI score for every populated ZIP code in the United States. The CNI strongly linked to variations in community healthcare needs and an indicator of a community's demand for various healthcare services. The CNI score by ZIP code identifies specific areas within a community where healthcare needs may be greater.

Overall, the CNI score for the community served was 3.9, this is higher than the CNI national average of 3.0, potentially indicating greater health care needs in this community. There were portions of the community (East Central Austin, South East Austin, North Austin, Manor, San Marcos, and University of Texas) where the CNI score was greater than 4.5, pointing to potentially more significant health needs among the population.

### 2018 Community Need Index by ZIP Code



### CNI High Need ZIP Codes

City	Community	County	ZIP Code	2018 CNI Score
Austin	East Central Austin	Travis	78721	5.0
Austin	East Central Austin	Travis	78723	5.0
Austin	North Austin	Travis	78752	5.0
Austin	SE Austin	Travis	78741	5.0
Austin	SE Austin	Travis	78742	5.0
Austin	SE Austin	Travis	78744	5.0
Austin	East Central Austin	Travis	78702	4.8
Austin	Manor	Travis	78724	4.8
Austin	North Austin	Travis	78753	4.8
Austin	North Austin	Travis	78758	4.8
Austin	University of TX	Travis	78712	4.6

City	Community	County	ZIP Code	2018 CNI Score
San Marcos	San Marcos	Hays	78666	4.6
Austin	ABIA-Del Valle	Travis	78719	4.4
Bartlett	Bartlett	Williamson	76511	4.4
Del Valle	ABIA-Del Valle	Travis	78617	4.4
Austin	ABIA-Del Valle	Travis	78725	4.0
Austin	Hyde Park-Rosedale	Travis	78751	4.0
Austin	North Austin	Travis	78754	4.0
Austin	Sunset Valley	Travis	78745	4.0
Georgetown	East Georgetown	Williamson	78626	4.0
Granger	E Williamson County	Williamson	76530	4.0
Taylor	E Williamson County	Williamson	76574	4.0
Thrall	E Williamson County	Williamson	76578	4.0

Source: IBM Watson Health / Claritas, 2018

### *Public Health Indicators*

Public health indicators were collected and analyzed to assess community health needs. Evaluation for the community served used 102 indicators. For each health indicator, a comparison between the most recently available community data and benchmarks for the same/similar indicator was made. The basis of benchmarks was available data for the U.S. and the State of Texas.

Where the community indicators showed greater need when compared to the State of Texas comparative benchmark, the difference between the community values and the state benchmark was calculated (need differential). Those indicators with need differentials in the 50<sup>th</sup> percentile of greater severity pinpointed community health needs from a quantitative perspective. These indicators are located in **Appendix D**.

### *Watson Health Community Data*

Watson Health supplemented the publicly available data with estimates of localized disease prevalence of heart disease and cancer as well as emergency department visit estimates. This information is located in **Appendix E**.

### *Focus Groups & Interviews*

BSWH worked jointly with Seton Healthcare, Williamson County Health District, and St. David's Foundation in collecting and sharing qualitative data (community input) on the health needs of this community.

In the focus group sessions and interviews participants identified and discussed the factors that contribute to the current health status of the community, and then identify the greatest barriers and strengths that contribute to the overall health of the community. For this community there were two (2) focus group sessions with a total of 39 participants and 17 interviews were conducted July through September 2018.

For the community served, the top health needs identified in these discussions included:

- Lack of awareness of services
- Low income
- Cultural barriers creating underuse
- Lack of transitional services
- Poor coordination and communication between not-for-profit and social service organizations
- Homelessness and lack of support services for this population
- Local politics

The Williamson, Travis, Hays Counties Health Community was described as a rapidly growing area, divided geographically by Interstate 35, with both rural and suburban areas. Due to rapid population growth, resources in the health community were at capacity and unable to keep up with demand, and the region lacked a central hub or epicenter to coordinate health services. Many participants discussed the geographic and income

differences in the area that lead to differences in access to healthcare facilities, primary care and specialty physicians, healthy food options, and affordable housing.

In the Travis focus group, participants shared that migrations from Austin to the western region were changing the historically conservative and rural area to be increasingly liberal, diverse, and urban; participants described social justice initiatives, hospitals committing to livable wages, and increasing provider diversity to match the local demographics and earn trust. In contrast, participants at the Taylor focus group consistently affirmed east Williamson County as rural and very compassionate, with local churches providing many of the social services the health community needed. Across the entire area, interview participants shared that barriers to better health include: lack of transportation, access to healthcare services, and a need for living wage jobs. Many working residents made below a living wage, compounded by a shortage of affordable housing, resulting in transient housing situations for some low-income families.

Participants in the Georgetown focus group noted that as Williamson County became an increasingly desirable place to live, the health community saw rapid gentrification and an increasing income gap. The low income and homeless populations were growing, but funding and support for organizations that serve these populations had not experienced a similar growth. Local politics and policies created barriers for organizations to serve these populations. Health community members discussed the limited public transportation in this area and how it affected access to health services; population growth on the west side of Williamson County, specifically Round Rock and Georgetown, led to expansion of healthcare services, but the lack of public transportation made these services unavailable to the lower income population on the east side of the county. Shortages of affordable healthy food options and housing leads to many families living in temporary housing options, likely aggravating chronic illness and behavioral health issues. The group noted there were limited resources available for the homeless, uninsured, and poor. Resources that were particularly lacking in the health community included: low cost or free dental clinics, homeless shelters, behavioral health providers and substance abuse treatment facilities that served the poor and indigent population. Additionally, participants stressed the importance of expanding transitional services to help patients move successfully from federal assistance programs to autonomy.

The participants noted that available services are underutilized, sometimes due to lack of health literacy, including an understanding of long-term consequences of their health choices. The lack of health literacy impacts the health community's understanding of alternatives to receiving non-emergent care in the emergency department. Many participants suggested providing better health education in schools. Mental health resources were consistently identified as a critical shortage area in this health community. Participants stressed a need for more substance abuse centers, affordable providers, youth counseling, and family services.

The participants noted that recent growth created challenges for organizations that were helping patients navigate the complex healthcare ecosystem, especially those patients who lacked insurance. Small charity organizations were overwhelmed with demand and could not support the needs of the uninsured and under-insured. Additional coordination across non-profit organizations, social services, and the local hospital systems was required.

### Community Health Needs Identified

A Health Needs Matrix identified the health needs that resulted from the community health needs assessment (see Methodology for Defining Community Need section). The matrix shows the convergence of needs identified in the qualitative data (interview and focus group feedback) and quantitative data (health indicators) and identifies the top health needs for this community.

#### Top Community Health Needs Identified

Williamson-Travis-Hays Valley Health Community		
Top Needs Identified	Category of Need	Public Health Indicator
Accidental poisoning deaths where opioids were involved	Health Behaviors - Substance Abuse	Annual Estimates of the Resident Population: April 1, 2010 to July 1, 2017. Accidental Poisoning Deaths where Opioids Were Involved
Adults Engaging in Binge Drinking During the Past 30 Days	Health Behaviors - Substance Abuse	2016 Percentage of a County's Adult Population that Reports Binge or Heavy Drinking in the Past 30 Days
Air Pollution - Particulate Matter daily density	Environment	2012 Average Daily Density of Fine Particulate Matter in Micrograms per Cubic Meter (PM2.5)
Asthma Admission: Pediatric (Risk-Adjusted-Rate)	Preventable Hospitalizations	Number Observed / Pediatric Population Under Age 18
Civilian veteran population 18+	SDH - Veterans	2012 Percent of population 18 years and over - Civilian veterans
Drug Poisoning Deaths Rate	Health Behaviors - Substance Abuse	2014-2016 Number of Drug Poisoning Deaths (Drug Overdose Deaths) per 100,000 Population
Gastroenteritis Admission: Pediatric (Risk-Adjusted-Rate)	Preventable Hospitalizations	Number Observed / Pediatric Population Under Age 18
Intentional Self-Harm; Suicide	Mental Health	2015 Intentional Self-Harm (Suicide) (X60-X84, Y87.0)
Motor Vehicle Driving Deaths with Alcohol Involvement	Health Behaviors - Substance Abuse	2012-2016 Percentage of Motor Vehicle Crash Deaths that had Alcohol Involvement
Perforated Appendix Admission: Adult (Risk-Adjusted-Rate per 100 Admissions for Appendicitis)	Preventable Hospitalizations	Number Observed / Adult Population Age 18 and older
Perforated Appendix Admission: Pediatric (Risk-Adjusted-Rate for Appendicitis)	Preventable Hospitalizations	Number Observed / Pediatric Population Under Age 18

Top Needs Identified	Category of Need	Public Health Indicator
Ratio of Population to One Dentist	Access To Care	2016 Ratio of Population to Dentists
Ratio of Population to One Non-Physician Primary Care Provider	Access To Care	2017 Ratio of Population to Primary Care Providers Other than Physicians
Ratio of Population to One Primary Care Physician	Access To Care	2015 Number of Individuals Served by One Physician in a County, if the Population was Equally Distributed Across Physicians
Renter-occupied housing	Environment - Housing	2017 Renter-occupied housing (percent of households)
Severe Housing Problems	Environment - Housing	2010-2014 Percentage of Households with at Least 1 of 4 Housing Problems: Overcrowding, High Housing Costs, or Lack of Kitchen or Plumbing Facilities
Sexually Transmitted Infection Incidence	Infectious Disease - Sexually Transmitted	2015 Number of Newly Diagnosed Chlamydia Cases per 100,000 Population
Social/Membership Associations	SDH - Social Isolation	2015 Number of Membership Associations per 10,000 Population
Urinary Tract Infection Admission: Pediatric (Risk-Adjusted-Rate)	Preventable Hospitalizations	Number Observed / Pediatric Population Under Age 18

Note: Listed alphabetically, not in order of significance

Source: IBM Watson Health, 2018

### Prioritized Significant Health Needs

Using the prioritization approach outlined in the overview section of this report, the following needs from the preceding list were determined to be significant and then prioritized.

The resulting prioritized health needs for this community were:

Priority	Need	Category of Need
1	Access to PCP	Access to Care
2	Accidental Poisoning Deaths Where Opioids Were Involved	Health Behaviors - Substance Abuse
3	Ratio of Population to One Non-Physician Primary Care Provider	Access to Care
4	Intentional Self-Harm; Suicide	Mental Health
5	Severe Housing Problems	Environment – Housing



### *Description of Health Needs*

A CHNA for the Williamson/Travis/Hays Health Community identified several significant community health needs that can be categorized as issues related to: access to care, mental health, substance abuse, and housing. Regionalized health needs affect all aspects of the population to some degree; however, it is often the most vulnerable populations that are negatively affected. Community health gaps define the resources and access to care within the county or region. Health and social concerns for this community were validated through key informant interviews, focus groups and county data. Access to care; specifically, access to primary care providers, opioid overdose deaths, suicide, and severe housing problems were identified as significant areas of concern and noted in the data results for Williamson, Travis and Hays counties.

### Primary Care Physician Providers

Primary care includes: family medicine, internal medicine, nursing, nurse practitioners, pharmacy, pediatrics, general obstetrics/gynecology, gerontology, behavioral health, community health, and the other people and professions who fulfill the general medical needs of patient populations.

Primary care professionals serve on the front lines of healthcare. For many individuals, they are the first point of contact with the healthcare system. They are often the first to recognize signs of depression, early signs of cancer or chronic disease, and other health concerns. Primary care providers ensure patients receive the right care, in the right setting, by the most appropriate provider, and in a manner consistent with the patient's desires and values. Primary care is also important because it lowers costs. Access to primary care helps to keep people out of emergency rooms, where care costs are much higher than other outpatient care. Annual check-ups can catch and treat problems earlier, and are also less costly than treating severe or advanced illness.<sup>2</sup>

The focus group participants expressed perceived lack of primary care physician providers and non-physician providers within the Williamson/Travis/Hays Health Community. The community has rural components that could present additional challenges to access to care. Transportation to disparate care sites across the county may have been difficult, if not impossible.

Hays County had a primary care physician to population ratio of one physician to every 2,404 residents. The Hays County rate was 44% worse than the overall Texas rate of one primary care physician to every 1,670 residents and was one of the top 5 ranked needs for this community.<sup>3</sup> While Travis and Williamson counties had primary care physician access that was better than the state value, community input focused on other barriers to accessing those providers, such as transportation, insurance coverage, and cost.

---

<sup>2</sup> **Primary Care Progress**, The Case for Primary Care, 2019

<sup>3</sup> Area Health Resource File/American Medical Association, County Health Rankings and Roadmaps **National Statistics**, 2018



### Non-Physician Primary Care Providers

There is a nationwide scarcity of physicians, particularly in small towns and cities. This shortage accentuates in rural areas across the country. Only about 11% of the nation's physicians work in rural areas, despite nearly 20% of Americans living there.<sup>4</sup> Demographic shifts, such as growth in the elderly or near elderly populations increase the need for primary care access. Estimates of the scope of the provider shortage in rural America vary, however it is generally agreed upon that thousands of additional Primary Care Providers are needed to meet the current demand in rural America and that tens of thousands of additional caregivers will be needed to meet the growing rural population. Recruiting physicians to rural areas is particularly challenging and it could take years to secure a vacant position.

The primary care shortage impacts both rural and urban areas, although its effects are more concentrated in rural areas. The number of patients living in urban or suburban areas experiencing a provider shortage is nearly equal to the number of patients living in rural areas experiencing the same thing – 21 million patients versus 23 million, respectively. These shortages occur because there simply are not enough primary care physicians, with only 33% of physicians choosing the PCP path. Going forward, this disparity is slated to worsen.<sup>5</sup>

Primary care physician extenders (e.g. nurse practitioners, physician assistants, and clinical nurse specialists) could help close the gap in access to primary care services when they are located in a community. Non-physician providers or physician extenders are typically licensed professionals such as Physician Assistants or Nurse Practitioners who treat and see patients. Dependent upon state regulations, extenders may practice independently or in physician run practices. Physician extenders expand the scope of primary care providers within a geographic area and help bridge the gap to both access to care and management of healthcare costs.

Non-physician primary care provider access in Hays and Williamson counties fell short of the Texas state threshold of one provider to 1,497 residents. Hays County shows the greatest need of the two counties with one non-physician primary care provider to every 2,065 residents; Williamson County had a ratio of one provider to every 1,823 residents. These statistics were 38% and 22% worse than the Texas state benchmark respectively. While Travis County's provider ratio (1:1,253) was better than the overall state ratio, it still indicates need if compared to the overall U.S. benchmark of one non-physician provider to 1,030 residents.<sup>6</sup>

### Accidental Poisoning Deaths: Opioids Involvement

Opioids were involved in 47,600 overdose deaths in 2017 (67.8% of all drug overdose deaths). Twenty-three of the 50 states in the U.S. have seen a statistically significant increase in opioid drug deaths from 2016 to 2017. Texas was not one of the states with a statistically significant increase, however, one accidental drug-overdose death is one

---

<sup>4</sup> J. Cromartie, Population & Migration (Washington, D.C.: **U.S. Department of Agriculture, Economic Research Service, May 26, 2012**)

<sup>5</sup> S. Heath, **Patient Engagement HIT**, 2018

<sup>6</sup> CMS, National Provider Identification Registry (NPPES), County Health Rankings & Roadmaps, 2018

too many for a community. The realization that over half of the overdose deaths are opioid related is a key reason for states to address this issue in their community. There were 70,237 drug overdose deaths in the United States in 2017. The age-adjusted rate of overdose deaths increased significantly by 9.6% from 2016 (19.8 per 100,000) to 2017 (21.7 per 100,000). Opioids, mainly synthetic opioids (other than methadone), are currently the main driver of drug overdose deaths.<sup>7</sup>

Travis County indicated a greater relative need within the health community. Travis County had 8.1 accidental opioid poisonings per 100,000 people, this was nearly double the Texas average of 4.3 poisonings per 100,000.<sup>8</sup> From a data perspective, the rate of opioid related drug overdose deaths in Travis County was one of the top 5 ranked needs for the Williamson/Travis/Hays Health Community. Opioid deaths remain a growing and significant concern across both Texas and the nation. Many social service agencies are impacted by the opioid epidemic burden and face challenges meeting the needs that present across all socioeconomic groups.

### Intentional Self Harm: Suicide

According to the National Institutes of Health, suicide is a major public health concern. Suicide is among the leading causes of death in the United States. Based on recent nationwide surveys, suicide in some populations is on the rise. Suicide was the second leading cause of death among individuals between the ages of 10 and 34, and the fourth leading cause of death among individuals between the ages of 35 and 54.<sup>9</sup> Suicide and the associated mental health issues are a prevalent concern across the U.S...

The suicide rate was identified as a need in both Travis and Williamson counties. Travis County had a suicide rate of 7.4 per 100,000 deaths and Williamson County had a rate of 5.9 per 100,000 deaths, these were greater than the overall Texas rate by 46% and 17% respectively.<sup>10</sup> Concerns about mental health care in this community were expressed in the focus groups and interviews. Participants in the prioritization sessions stressed the need to address access to mental health providers, mental health stigma, and education when addressing the suicide in the community.

Texas has specific programs to aide both educators and health professionals, to identify and assist the population at risk. Two populations that present the highest risk are veterans/active military and teens and young adults.<sup>11</sup> Communities that implement proactive policies and intervention programs that assist residents at risk for suicide, provide a platform for support along with prevention.

### Severe Housing Problems

There is strong evidence characterizing housing's relationship to health as housing stability, quality, safety, and affordability all affect health outcomes. The impact of housing

---

<sup>7</sup> **U.S. Center for Disease Control and Prevention**, 2019

<sup>8</sup> Texas Health and Human Services Center for Health Statistics, 2015

<sup>9</sup> National Institute of Mental Health, **Suicide**, 2019

<sup>10</sup> Texas Health Data Center for Health Statistics, 2015

<sup>11</sup> **Texas Suicide Prevention**, 2019

on health is now being widely considered by policy makers and healthcare providers. Housing is one of the best-researched social determinants of health, and selected housing interventions for low-income people have been found to improve health outcomes and decrease health care costs.<sup>12</sup>

The community input sessions for this community, and throughout the region BWHS serves, expressed that lack of affordable housing was becoming a prevalent concern in their communities. Texas communities are growing, often at double digit rates, this highlights the need for stable and affordable housing. Also, the growing elderly population is transitioning from their life long homes to smaller, affordable, and more manageable housing. The challenge in managing the need for housing in growing communities is relevant across both Texas, and the nation.

Within the Williamson/Travis/Hays Health Community, 22.6% of Hays County households and 14.8% of Travis County households had at least one of four severe housing problems: overcrowding, high housing costs, or lack of kitchen or plumbing facilities. The rate for Hays and Travis county households were 24% and 17% higher than the overall Texas value respectively, making safe and affordable housing an issue within this community.<sup>13</sup>

### *Summary*

BSWH conducted its Community Health Needs Assessments beginning June 2018 to identify and begin addressing the health needs of the communities they serve. Using both qualitative community feedback as well as publicly available and proprietary health indicators, BSWH was able to identify and prioritize community health needs for their healthcare system. With the goal of improving the health of the community, implementation plans with specific tactics and time frames will be developed for the health needs BSWH chooses to address for the community served.

---

<sup>12</sup> Health Affairs, **Housing and Health: An Overview of the Literature**, 2018

<sup>13</sup> Comprehensive Housing Affordability Strategy (CHAS) data, U.S. Department of Housing and Urban Development (HUD); County Health Rankings & Roadmaps 2018

## Appendix A: Key Health Indicator Sources

Category	Public Health Indicator	Source
Access to Care	Hospital Stays for Ambulatory-Care Sensitive Conditions-Medicare	2018 County Health Rankings & Roadmaps; Dartmouth Atlas of Health Care, CMS
	Percentage of Population under age 65 without Health Insurance	2018 County Health Rankings & Roadmaps; Small Area Health Insurance Estimates (SAHIE), United States Census Bureau
	Price-Adjusted Medicare Reimbursements per Enrollee <b>NEW 2019</b>	2018 County Health Rankings & Roadmaps; Dartmouth Atlas of Health Care, CMS
	Ratio of Population to One Dentist	2018 County Health Rankings & Roadmaps; Area Health Resource File/National Provider Identification file (CMS)
	Ratio of Population to One Non-Physician Primary Care Provider	2018 County Health Rankings & Roadmaps; CMS, National Provider Identification Registry (NPPES)
	Ratio of Population to One Primary Care Physician	2018 County Health Rankings & Roadmaps; Area Health Resource File/American Medical Association
	Uninsured Children	2018 County Health Rankings & Roadmaps; Small Area Health Insurance Estimates (SAHIE), United States Census Bureau
Conditions/Diseases	Adult Obesity (Percent)	2018 County Health Rankings & Roadmaps; CDC Diabetes Interactive Atlas, The National Diabetes Surveillance System
	Arthritis in Medicare Population	CMS.gov Chronic conditions 2007-2015
	Atrial Fibrillation in Medicare Population	CMS.gov Chronic conditions 2007-2015
	Cancer Incidence - All Causes	2011-2015 State Cancer Profiles, National Cancer Institute (CDC)
	Cancer Incidence - Colon	2011-2015 State Cancer Profiles, National Cancer Institute (CDC)
	Cancer Incidence - Female Breast	2011-2015 State Cancer Profiles, National Cancer Institute (CDC)
	Cancer Incidence - Lung	2011-2015 State Cancer Profiles, National Cancer Institute (CDC)
	Cancer Incidence - Prostate	2011-2015 State Cancer Profiles, National Cancer Institute (CDC)
	Chronic Kidney Disease in Medicare Population	CMS.gov Chronic conditions 2007-2015
	COPD in Medicare Population	CMS.gov Chronic conditions 2007-2015
	Diabetes Diagnoses in Adults	CMS.gov Chronic conditions 2007-2015
	Diabetes prevalence	2018 County Health Rankings (CDC Diabetes Interactive Atlas)
	Frequent physical distress	2016 Behavioral Risk Factor Surveillance System (BRFSS)
	Heart Failure in Medicare Population	CMS.gov Chronic conditions 2007-2015
	HIV Prevalence	2018 County Health Rankings & Roadmaps; National Center for HIV/AIDS, Viral Hepatitis, STD, and TB Prevention (NCHHSTP)
	Hyperlipidemia in Medicare Population	CMS.gov Chronic conditions 2007-2015
	Hypertension in Medicare Population	CMS.gov Chronic conditions 2007-2015

Category	Public Health Indicator	Source
	Ischemic Heart Disease in Medicare Population	CMS.gov Chronic conditions 2007-2015
	Osteoporosis in Medicare Population	CMS.gov Chronic conditions 2007-2015
	Stroke in Medicare Population	CMS.gov Chronic conditions 2007-2015
Environment	Air Pollution - Particulate Matter daily density	2018 County Health Rankings & Roadmaps; Environmental Public Health Tracking Network (CDC)
	Drinking Water Violations (Percent of Population Exposed)	2018 County Health Rankings & Roadmaps; Safe Drinking Water Information System (SDWIS), United States Environmental Protection Agency (EPA)
	Driving Alone to Work	2018 County Health Rankings & Roadmaps; American Community Survey, 5-Year Estimates, United States Census Bureau
	Elderly isolation. 65+ Householder living alone <b>NEW 2019</b>	U.S. Census Bureau, 2012-2016 American Community Survey 5-Year Estimates
	Food Environment Index	2018 County Health Rankings & Roadmaps; USDA Food Environment Atlas, Map the Meal Gap from Feeding America, United States Department of Agriculture (USDA)
	Food Insecure	2018 County Health Rankings & Roadmaps; Map the Meal Gap, Feeding America
	Limited Access to Healthy Foods (Percent of Low Income)	2018 County Health Rankings & Roadmaps; USDA Food Environment Atlas, United States Department of Agriculture (USDA)
	Long Commute Alone	2018 County Health Rankings & Roadmaps; American Community Survey, 5-Year Estimates, United States Census Bureau
	No vehicle available <b>NEW 2019</b>	U.S. Census Bureau, 2017 American Community Survey 1-Year Estimates
	Population with Adequate Access to Locations for Physical Activity	2018 County Health Rankings & Roadmaps; Business Analyst, Delorme map data, ESRI, & US Census Tigerline Files (ArcGIS)
	Renter-occupied housing <b>NEW 2019</b>	U.S. Census Bureau, 2017 American Community Survey 1-Year Estimates
	Residential segregation - black/white <b>NEW 2019</b>	2018 County Health Rankings (American Community Survey, 5-year estimates)
	Residential segregation - non-white/white <b>NEW 2019</b>	2018 County Health Rankings (American Community Survey, 5-year estimates)
	Severe Housing Problems	2018 County Health Rankings & Roadmaps; Comprehensive Housing Affordability Strategy (CHAS) data, U.S. Department of Housing and Urban Development (HUD)
Health Behaviors	Adult Smoking	2018 County Health Rankings & Roadmaps; The Behavioral Risk Factor Surveillance System (BRFSS)
	Adults Engaging in Binge Drinking During the Past 30 Days	2018 County Health Rankings & Roadmaps; The Behavioral Risk Factor Surveillance System (BRFSS)
	Disconnected youth <b>NEW 2019</b>	2018 County Health Rankings (Measure of America)
	Drug Poisoning Deaths Rate	2018 County Health Rankings & Roadmaps, CDC WONDER Mortality Data
	Insufficient sleep <b>NEW 2019</b>	2016 Behavioral Risk Factor Surveillance System (BRFSS)
	Motor Vehicle Driving Deaths with Alcohol Involvement	2018 County Health Rankings & Roadmaps; Fatality Analysis Reporting System (FARS)
	Physical Inactivity	2018 County Health Rankings & Roadmaps; CDC Diabetes Interactive Atlas, The National Diabetes Surveillance System
	Sexually Transmitted Infection Incidence	2018 County Health Rankings & Roadmaps; National Center for HIV/AIDS, Viral Hepatitis, STD, and TB Prevention (NCHHSTP)
	Teen Birth Rate per 1,000 Female Population, Ages 15-19	2018 County Health Rankings & Roadmaps; National Center for Health Statistics - Natality files, National Vital Statistics System (NVSS)

Category	Public Health Indicator	Source
Health Status	Adults Reporting Fair or Poor Health	2018 County Health Rankings & Roadmaps; The Behavioral Risk Factor Surveillance System (BRFSS)
	Average Number of Physically Unhealthy Days Reported in Past 30 days (Age-Adjusted)	2018 County Health Rankings & Roadmaps; The Behavioral Risk Factor Surveillance System (BRFSS)
Injury & Death	Cancer Mortality Rate	2013 Texas Health Data, Center for Health Statistics, Texas Department of State Health Services
	Child Mortality Rate	2018 County Health Rankings & Roadmaps, CDC WONDER Mortality Data
	Chronic Lower Respiratory Disease (CLRD) Mortality Rate	2013 Texas Health Data, Center for Health Statistics, Texas Department of State Health Services
	Death rate due to firearms <b>NEW 2019</b>	2018 County Health Rankings (CDC WONDER Environmental Data)
	Heart Disease Mortality Rate	2013 Texas Health Data, Center for Health Statistics, Texas Department of State Health Services
	Infant Mortality Rate	2018 County Health Rankings & Roadmaps, CDC WONDER Mortality Data
	Motor Vehicle Crash Mortality Rate	2018 County Health Rankings & Roadmaps, CDC WONDER Mortality Data
	Number of deaths due to injury <b>NEW 2019</b>	2018 County Health Rankings & Roadmaps, CDC WONDER Mortality Data
	Premature Death (Potential Years Lost)	2018 County Health Rankings & Roadmaps; National Center for Health Statistics - Mortality Files, National Vital Statistics System (NVSS)
	Stroke Mortality Rate	2013 Texas Health Data, Center for Health Statistics, Texas Department of State Health Services
Maternal & Child Health	First Trimester Entry into Prenatal Care	2016 Texas Health and Human Services - Vital statistics annual report
	Low Birth Weight Percent	2018 County Health Rankings & Roadmaps; National Center for Health Statistics - Natality files, National Vital Statistics System (NVSS)
	Low Birth Weight Rate	2016 Texas Health and Human Services - Vital statistics annual report - Preventable Hospitalizations
	Preterm Births <37 Weeks Gestation	2015 Kids Discount Data Center
	Very Low Birth Weight (VLBW)	Centers for Disease Control and Prevention WONDER
Mental Health Conditions/Diseases	Accidental poisoning deaths where opioids were involved <b>NEW 2019</b>	U.S. Census Bureau, Population Division and 2015 Texas Health and Human Services Center for Health Statistics Opioid related deaths in Texas
	Alzheimer's Disease/Dementia in Medicare Population	CMS.gov Chronic conditions 2007-2015
	Average Number of Mentally Unhealthy Days Reported in Past 30 days (Age-Adjusted)	2018 County Health Rankings & Roadmaps; The Behavioral Risk Factor Surveillance System (BRFSS)
	Depression in Medicare Population	CMS.gov Chronic conditions 2007-2015
	Frequent mental distress	2016 Behavioral Risk Factor Surveillance System (BRFSS)
	Intentional Self-Harm; Suicide <b>NEW 2019</b>	2015 Texas Health Data Center for Health Statistics
	Ratio of Population to one Mental Health Provider	2018 County Health Rankings & Roadmaps; CMS, National Provider Identification Registry (NPPES)
	Schizophrenia and Other Psychotic Disorders in Medicare Population	CMS.gov Chronic conditions 2007-2015
Population	Children Eligible for Free Lunch Enrolled in Public Schools	2018 County Health Rankings & Roadmaps, The National Center for Education Statistics (NCES)



Category	Public Health Indicator	Source
	Children in Poverty	2018 County Health Rankings & Roadmaps; Small Area Health Insurance Estimates (SAHIE), United States Census Bureau
	Children in Single-Parent Households	2018 County Health Rankings & Roadmaps; American Community Survey (ACS), 5 Year Estimates (United States Census Bureau)
	Civilian veteran population 18+ <b>NEW 2019</b>	U.S. Census Bureau, 2012-2016 American Community Survey 5-Year Estimates
	Disabled population, civilian noninstitutionalized	U.S. Census Bureau, 2012-2016 American Community Survey 5-Year Estimates
	High School Dropout	2016 Texas Education Agency
	High School Graduation	2017 Texas Education Agency
	Homicides	2018 County Health Rankings & Roadmaps, CDC WONDER Mortality Data
	Household income, median <b>NEW 2019</b>	2018 County Health Rankings (2016 Small Area Income and Poverty Estimates)
	Income Inequality	2018 County Health Rankings & Roadmaps; American Community Survey (ACS), 5 Year Estimates (United States Census Bureau)
	Individuals Living Below Poverty Level	2012-2016 US Census Bureau - American FactFinder
	Individuals Who Report Being Disabled	2012-2016 US Census Bureau - American FactFinder
	Non-English-speaking households <b>NEW 2019</b>	U.S. Census Bureau, 2012-2016 American Community Survey 5-Year Estimates
	Social/Membership Associations	2018 County Health Rankings & Roadmaps; 2015 County Business Patterns, United States Census Bureau
	Some College	2018 County Health Rankings & Roadmaps; American Community Survey (ACS), 5 Year Estimates (United States Census Bureau)
	Unemployment	2018 County Health Rankings & Roadmaps; Local Area Unemployment Statistics (LAUS), Bureau of Labor Statistics
	Violent Crime Offenses	2018 County Health Rankings & Roadmaps; Uniform Crime Reporting (UCR) Program, United States Department of Justice, Federal Bureau of Investigation (FBI)
<b>Preventable Hospitalizations</b>	Asthma Admission: Pediatric (Risk-Adjusted-Rate)	2016 Texas Health and Human Services Center for Health Statistics Preventable Hospitalizations
	Diabetes Lower-Extremity Amputation Admission: Adult (Risk-Adjusted-Rate)	2016 Texas Health and Human Services Center for Health Statistics Preventable Hospitalizations
	Diabetes Short-term Complications Admission: Pediatric (Risk-Adjusted-Rate)	2016 Texas Health and Human Services Center for Health Statistics Preventable Hospitalizations
	Gastroenteritis Admission: Pediatric (Risk-Adjusted-Rate)	2016 Texas Health and Human Services Center for Health Statistics Preventable Hospitalizations
	Perforated Appendix Admission: Adult (Risk-Adjusted-Rate per 100 Admissions for Appendicitis)	2016 Texas Health and Human Services Center for Health Statistics Preventable Hospitalizations
	Perforated Appendix Admission: Pediatric (Risk-Adjusted-Rate for Appendicitis)	2016 Texas Health and Human Services Center for Health Statistics Preventable Hospitalizations
	Uncontrolled Diabetes Admission: Adult (Risk-Adjusted-Rate)	2016 Texas Health and Human Services Center for Health Statistics Preventable Hospitalizations
	Urinary Tract Infection Admission: Pediatric (Risk-Adjusted-Rate)	2016 Texas Health and Human Services Center for Health Statistics Preventable Hospitalizations
<b>Prevention</b>	Diabetic Monitoring in Medicare Enrollees	2018 County Health Rankings & Roadmaps; Dartmouth Atlas of Health Care, CMS

Category	Public Health Indicator	Source
	Mammography Screening in Medicare Enrollees	2018 County Health Rankings & Roadmaps; Dartmouth Atlas of Health Care, CMS



## **Appendix B: Community Resources Identified to Potentially Address Significant Health Needs**

Below is a list of resources available in the community with the ability to address the significant health needs identified in the assessment. For a continually updated list of the resources available to address these needs, as well as other social determinants of health, please visit our website (**[BSWHealth.com/CommunityNeeds](http://BSWHealth.com/CommunityNeeds)** ).

### *Resources Identified*

COMMUNITY HEALTH NEED	CATEGORY	SERVICE	FACILITY NAME	ADDRESS	CITY	PHONE NUMBER
Access to PCP	Access to Care	Primary Care	AIDS Services of Austin	7215 Cameron Road	Austin	512-458-2437
Access to PCP	Access to Care	Primary Care	Ben White Health Clinic	1221 West Ben White, Suite 200	Austin	877-800-5722
Access to PCP	Access to Care	Primary Care	Blackstock Health Center	1313 Red River Street, Suite 100	Austin	512-978-9610
Access to PCP	Access to Care	Primary Care	Bluebonnet Trails Community Service- Hutto	101 Chris Kelley Blvd	Hutto	512-759-3980
Access to PCP	Access to Care	Primary Care	Bluebonnet Trails Community Services	1009 North Georgetown Street	Round Rock	844-309-6385
Access to PCP	Access to Care	Primary Care	Bluebonnet Trails Community Services	1009 North Georgetown Street	Round Rock	844-309-6385
Access to PCP	Access to Care	Primary Care	Cedar Park Community Based Outpatient Clinic	600 North Bell Blvd.	Cedar Park	512-219-2340
Access to PCP	Access to Care	Primary Care	Community Care Health Centers - Hancock Walk In Care	1000 East 41st Street, Suite 925	Austin	512-978-9940
Access to PCP	Access to Care	Primary Care	Community Care Health Centers - Manor Health Center	600 West Carrie-Manor	Manor	512-978-9780
Access to PCP	Access to Care	Primary Care	Community Care Health Centers - William Cannon Walk-In Care	6801 S IH 35 #1-E Austin	Austin	512-978-9960
Access to PCP	Access to Care	Primary Care	Complex Primary Care	1400 N IH 35, Suite 2.450	Austin	512-978-8080
Access to PCP	Access to Care	Primary Care	David Powell Health Center	4614 North IH 35	Austin	512-978-9100

COMMUNITY HEALTH NEED	CATEGORY	SERVICE	FACILITY NAME	ADDRESS	CITY	PHONE NUMBER
Access to PCP	Access to Care	Primary Care	Del Valle Center	3518 FM 973	Del Valle	512-978-9670
Access to PCP	Access to Care	Primary Care	Del Valle Center	3518 FM 973	Del Valle	512-978-9670
Access to PCP	Access to Care	Primary Care	Dell Children's Circle of Care at Hutto	123 Ed Schmidt Blvd, Suite 140	Hutto	877-800-5722
Access to PCP	Access to Care	Primary Care	Dell Children's Circle of Care at Whitestone	1730 East Whitestone Blvd., Suite 101	Cedar Park	877-800-5722
Access to PCP	Access to Care	Primary Care	Dell Children's Circle of Care Pediatrics at Round Rock Heal	2120 North Mays Street, Suite 430	Round Rock	877-800-5722
Access to PCP	Access to Care	Primary Care	Dell Children's Circle of Care Pediatrics at Texas A&M Health	3950 North AW Grimes N 201	Round Rock	877-800-5722
Access to PCP	Access to Care	Primary Care	Dell Children's Medical Center of Central Texas/UTSW Adult	4900 Mueller Blvd., Austin, TX 78723	Austin	512-324-0060
Access to PCP	Access to Care	Primary Care	Family Medicine at Lake Aire Center	2423 Williams Drive, #105	Georgetown	877-800-5722
Access to PCP	Access to Care	Primary Care	Immunization Branch	1100 West 49th Street	Austin	512-458-7284
Access to PCP	Access to Care	Primary Care	Lone Star Circle of Care at Collinfield	8913 Collinfield Drive, Unit 1	Austin	877-800-5722
Access to PCP	Access to Care	Primary Care	Lone Star Circle of Care at Stassney Pediatrics	730 West Stassney, Suite 110	Austin	877-800-5722
Access to PCP	Access to Care	Primary Care	Lone Star Circle of Care Family Medicine	2423 Williams Drive, Suite 105	Georgetown	877-800-5722
Access to PCP	Access to Care	Primary Care	Lone Star Circle of Care Georgetown Community Clinic	701 East University Avenue	Georgetown	512-863-9208
Access to PCP	Access to Care	Primary Care	Lone Star Circle of Care Pediatrics at Lake Aire Medical Cen	2423 Williams Drive, #103	Georgetown	877-800-5722
Access to PCP	Access to Care	Primary Care	Lone Star Circle of Care Senior Health Center	2423 Williams Drive, Suite 113	Georgetown	877-800-5722

Williamson/Travis/Hays Counties Health Community  
Community Health Needs Assessment

COMMUNITY HEALTH NEED	CATEGORY	SERVICE	FACILITY NAME	ADDRESS	CITY	PHONE NUMBER
Access to PCP	Access to Care	Primary Care	North Central Health Center Dental Clinic	1210 West Braker Lane	Austin	512-978-9780
Access to PCP	Access to Care	Primary Care	Oak Hill Health Center	8656-A Hwy 71 W, Suite C	Austin	512-978-9820
Access to PCP	Access to Care	Primary Care	Pflugerville Health Center	15822 Foothill Farms Loop	Pflugerville	512-978-9840
Access to PCP	Access to Care	Primary Care	Rundberg Health Center	825 East Rundberg Lane, Suite B-1	Austin	512-978-9600
Access to PCP	Access to Care	Primary Care	Sacred Heart Community Clinic (SHCC)	620 Round Rock West Drive	Round Rock	512-827-7422
Access to PCP	Access to Care	Primary Care	Samaritan Health Ministries	700 West Whitestone Blvd, Suite A	Cedar Park	512-331-5828
Access to PCP	Access to Care	Primary Care	Samaritan Health Ministries	700 West Whitestone Blvd, Suite 3	Cedar Park	512-331-5828
Access to PCP	Access to Care	Primary Care	Sandra Joy Anderson Community Health & Wellness Center	1725 East 11th Street	Austin	512-978-8400
Access to PCP	Access to Care	Primary Care	Seaton Circle of Care Family Medicine	1111 Research Blvd., Suite 320	Austin	877-800-5722
Access to PCP	Access to Care	Primary Care	Senior Health at Lake Aire Medical Center	2423 Williams Drive, #113	Georgetown	877-800-5722
Access to PCP	Access to Care	Primary Care	Seton Circle of Care	1111 Research Blvd., Suite 295	Austin	877-800-5722
Access to PCP	Access to Care	Primary Care	Seton Circle of Care Family Medicine at Texas A&M Health Sci	3950 North AW Grimes N301A & N 202	Round Rock	877-800-5722
Access to PCP	Access to Care	Primary Care	Seton Circle of Care Senior Care at Texas A&M Health Science	3950 North AW Grimes N104	Round Rock	877-800-5722
Access to PCP	Access to Care	Primary Care	Seton Circle of Care Women's Services	1111 Research Blvd., Suite 295	Austin	877-800-5722
Access to PCP	Access to Care	Primary Care	Seton Circle of Care Women's Services at Texas A&M Health Sc	3950 North AW Grimes N103	Round Rock	877-800-5722

Williamson/Travis/Hays Counties Health Community  
Community Health Needs Assessment

COMMUNITY HEALTH NEED	CATEGORY	SERVICE	FACILITY NAME	ADDRESS	CITY	PHONE NUMBER
Access to PCP	Access to Care	Primary Care	South Austin Health Center	2529 South First Street	Austin	512-978-8400
Access to PCP	Access to Care	Primary Care	Southeast Health and Wellness Center	2901 Montopolis Drive	Austin	512-978-9901
Access to PCP	Access to Care	Primary Care	WIC Williamson County	100 West 3rd Street	Georgetown	512-943-3680
Access to PCP	Access to Care	Primary Care	WIC Williamson County	211 Commerce Blvd #115	Round Rock	512-248-3254
Access to PCP	Access to Care	Primary Care	WIC Williamson County	350 Discovery Blvd, Suite 102	Cedar Park	512-260-4241
Severe Housing Problems	Environment - Housing	Crisis Services	Bluebonnet Trails Community Services	711 North College Street	Georgetown	512-869-2650
Severe Housing Problems	Environment - Housing	Crisis Services	Bluebonnet Trails Community Services	1009 North Georgetown Street	Round Rock	844-309-6385
Severe Housing Problems	Environment - Housing	Crisis Services	Bluebonnet Trails Community Services	1009 North Georgetown Street	Round Rock	844-309-6385
Severe Housing Problems	Environment - Housing	Crisis Services	San Gabriel Crisis Center	711 North College Street	Georgetown	512-869-2650
Severe Housing Problems	Environment - Housing	Crisis Services	Starry Counseling	1300 North Mays	Round Rock	512-388-8290
Severe Housing Problems	Environment - Housing	Crisis Services	The Safe Alliance	1515 Grove Blvd	Austin	512-267-7233
Severe Housing Problems	Environment - Housing	Help Find Housing	Community First Village	9301 Hog Eye Road, Suite 950	Austin	512-328-7299
Severe Housing Problems	Environment - Housing	Help Find Housing	Opportunities for Williamson-Burnet Counties	604 High Tech Drive	Georgetown	512-763-1400
Severe Housing Problems	Environment - Housing	Help Hotlines	Austin Resource Center for Independent Living (ARCIL, Inc.)	8200 Cameron Road, Suite C154	Austin	512-832-6349
Severe Housing Problems	Environment - Housing	Help Hotlines	Austin Resource Center for Independent Living (ARCIL, Inc.)	525 Round Rock West, Suite A120	Round Rock	512-828-4624
Severe Housing Problems	Environment - Housing	Help Hotlines	Bluebonnet Trails Community Services	1009 North Georgetown Street	Round Rock	844-309-6385

Williamson/Travis/Hays Counties Health Community  
Community Health Needs Assessment

COMMUNITY HEALTH NEED	CATEGORY	SERVICE	FACILITY NAME	ADDRESS	CITY	PHONE NUMBER
Severe Housing Problems	Environment - Housing	Help Hotlines	Bluebonnet Trails Community Services	1009 North Georgetown Street	Round Rock	844-309-6385
Severe Housing Problems	Environment - Housing	Help Hotlines	Hope Alliance	1011 Gattis School Road, Suite 106	Round Rock	800-460-7233
Severe Housing Problems	Environment - Housing	Help Hotlines	San Gabriel Crisis Center	711 North College Street	Georgetown	512-869-2650
Severe Housing Problems	Environment - Housing	Help Hotlines	Starry Counseling	1300 North Mays	Round Rock	512-388-8290
Severe Housing Problems	Environment - Housing	Help Hotlines	Texas Rio Grande Legal Aid	4920 North Interstate 35	Austin	888-988-9996
Severe Housing Problems	Environment - Housing	Help Hotlines	Volunteer Legal Services of Central Texas	1601 Haskell Street	Austin	512-476-5550
Severe Housing Problems	Environment - Housing	Help Hotlines	Volunteer Legal Services of Central Texas	601 East St. John	Austin	512-476-5550
Severe Housing Problems	Environment - Housing	Help Hotlines	Williamson-Burnet County Opportunities, Inc. (WBCO)	110 South Brown	Georgetown	512-255-2202
Severe Housing Problems	Environment - Housing	Help Understanding Government Programs	Disability Rights Texas	2222 West Braker Lane	Austin	512-454-4816
Severe Housing Problems	Environment - Housing	Help Understanding Government Programs	Opportunities for Williamson-Burnet Counties	604 High Tech Drive	Georgetown	512-763-1400
Severe Housing Problems	Environment - Housing	Help Understanding Government Programs	WIC Williamson County	100 West 3rd Street	Georgetown	512-943-3680
Severe Housing Problems	Environment - Housing	Help Understanding Government Programs	WIC Williamson County	211 Commerce Blvd #115	Round Rock	512-248-3254
Severe Housing Problems	Environment - Housing	Help Understanding Government Programs	WIC Williamson County	350 Discovery Blvd, Suite 102	Cedar Park	512-260-4241

COMMUNITY HEALTH NEED	CATEGORY	SERVICE	FACILITY NAME	ADDRESS	CITY	PHONE NUMBER
Severe Housing Problems	Environment - Housing	Housing Insecurity Services	Community First Village	9301 Hog Eye Road, Suite 950	Austin	512-328-7299
Severe Housing Problems	Environment - Housing	Residential Housing	Cedar Ridge Apartments	2702 South Bagdad Road	Leander	512-259-7648
Severe Housing Problems	Environment - Housing	Residential Housing	Community First Village	9301 Hog Eye Road, Suite 950	Austin	512-328-7299
Severe Housing Problems	Environment - Housing	Safe Housing	Hope Alliance	1011 Gattis School Road, Suite 106	Round Rock	800-460-7233
Severe Housing Problems	Environment - Housing	Safe Housing: Children	Hope Alliance	1011 Gattis School Road, Suite 106	Round Rock	800-460-7233
Severe Housing Problems	Environment - Housing	School Equivalency	Literacy Coalition of Central Texas	724 Eberhart Lane, Suite 500	Austin	512-326-8655
Severe Housing Problems	Environment - Housing	School Equivalency	Literacy Council Wilco	2411 Williams Drive, Suite 1	Georgetown	512-869-0497
Severe Housing Problems	Environment - Housing	School Equivalency	The Caring Place	2000 Railroad Avenue	Georgetown	512-943-0700
Severe Housing Problems	Environment - Housing	Short Term Housing	Ronald McDonald House Charities of Central Texas	1315 Barbara Jordan Blvd	Austin	512-472-9844
Severe Housing Problems	Environment - Housing	Social Services	AIDS Services of Austin	7215 Cameron Road	Austin	512-458-2437
Severe Housing Problems	Environment - Housing	Social Services	David Powell Health Center	4614 North IH 35	Austin	512-978-9100
Severe Housing Problems	Environment - Housing	Temporary Shelter	Annunciation Maternity Home	3610 Shell Road	Georgetown	877-714-2836
Severe Housing Problems	Environment - Housing	Temporary Shelter	Austin Resource Center for the Homeless (The Arch)	400 Nueces	Austin	512-305-4100
Severe Housing Problems	Environment - Housing	Temporary Shelter	Hope Alliance	1011 Gattis School Road, Suite 106	Round Rock	800-460-7233
Severe Housing Problems	Environment - Housing	Temporary Shelter	Salvation Army	501 East 8th Street	Austin	512-476-1111
Severe Housing Problems	Environment - Housing	Temporary Shelter	The Downtown Shelter/Salvation Army	501 East 8th Street	Austin	512-476-1111
Severe Housing Problems	Environment - Housing	Temporary Shelter	The Safe Alliance	1515 Grove Blvd	Austin	512-267-7233

Williamson/Travis/Hays Counties Health Community  
Community Health Needs Assessment

COMMUNITY HEALTH NEED	CATEGORY	SERVICE	FACILITY NAME	ADDRESS	CITY	PHONE NUMBER
Accidental Poisoning Deaths Where Opioids Were Involved	Health Behaviors - Substance Abuse	Behavioral Health Services	AIDS Services of Austin	7215 Cameron Road	Austin	512-458-2437
Accidental Poisoning Deaths Where Opioids Were Involved	Health Behaviors - Substance Abuse	Behavioral Health Services	Behavioral Health at Ben White Health Clinic	1221 West Ben White	Austin	877-800-5722
Accidental Poisoning Deaths Where Opioids Were Involved	Health Behaviors - Substance Abuse	Behavioral Health Services	Behavioral Health at Round Rock Health Clinic	2120 North Mays Street, Suite 430	Round Rock	877-800-5722
Accidental Poisoning Deaths Where Opioids Were Involved	Health Behaviors - Substance Abuse	Behavioral Health Services	Blackstock Health Center	1313 Red River Street, Suite 100	Austin	512-978-9610
Accidental Poisoning Deaths Where Opioids Were Involved	Health Behaviors - Substance Abuse	Behavioral Health Services	Bluebonnet Trails Community Service-Georgetown	711 North College Street	Georgetown	512-869-2650
Accidental Poisoning Deaths Where Opioids Were Involved	Health Behaviors - Substance Abuse	Behavioral Health Services	Bluebonnet Trails Community Service- Hutto	101 Chris Kelley Blvd	Hutto	512-759-3980
Accidental Poisoning Deaths Where Opioids Were Involved	Health Behaviors - Substance Abuse	Behavioral Health Services	Bluebonnet Trails Community Service- Taylor	404 Carlos G. Parker Blvd NW	Taylor	512-365-1600
Accidental Poisoning Deaths Where Opioids Were Involved	Health Behaviors - Substance Abuse	Behavioral Health Services	Bluebonnet Trails Community Services	711 North College Street	Georgetown	512-869-2650
Accidental Poisoning Deaths Where Opioids Were Involved	Health Behaviors - Substance Abuse	Behavioral Health Services	Bluebonnet Trails Community Services	1009 North Georgetown Street	Round Rock	844-309-6385
Accidental Poisoning Deaths Where Opioids Were Involved	Health Behaviors - Substance Abuse	Behavioral Health Services	Bluebonnet Trails Community Services	1009 North Georgetown Street	Round Rock	844-309-6385
Accidental Poisoning Deaths Where Opioids Were Involved	Health Behaviors - Substance Abuse	Behavioral Health Services	Cedar Park Community Based Outpatient Clinic	600 North Bell Blvd.	Cedar Park	512-219-2340
Accidental Poisoning Deaths Where Opioids Were Involved	Health Behaviors - Substance Abuse	Behavioral Health Services	David Powell Health Center	4614 North IH 35	Austin	512-978-9100
Accidental Poisoning Deaths Where Opioids Were Involved	Health Behaviors - Substance Abuse	Behavioral Health Services	Dell Children's Circle of Care at Hutto	123 Ed Schmidt Blvd, Suite 140	Hutto	877-800-5722
Accidental Poisoning Deaths Where Opioids Were Involved	Health Behaviors - Substance Abuse	Behavioral Health Services	Dell Children's Circle of Care Pediatrics Medical Center	2423 Williams Drive, Suite 103	Georgetown	877-800-5722
Accidental Poisoning Deaths Where Opioids Were Involved	Health Behaviors - Substance Abuse	Behavioral Health Services	Integral Care Dove Springs Clinic South Austin	5015 South IH 35, Suite 200	Austin	512-472-4357
Accidental Poisoning Deaths Where Opioids Were Involved	Health Behaviors - Substance Abuse	Behavioral Health Services	Integral Care East 2nd Street Clinic	1631 East 2nd Street	Austin	512-472-4357



Williamson/Travis/Hays Counties Health Community  
Community Health Needs Assessment

COMMUNITY HEALTH NEED	CATEGORY	SERVICE	FACILITY NAME	ADDRESS	CITY	PHONE NUMBER
Accidental Poisoning Deaths Where Opioids Were Involved	Health Behaviors - Substance Abuse	Behavioral Health Services	Integral Care Psychiatric Emergency Services	1165 Airport Blvd, 2nd Floor	Austin	512-472-4357
Accidental Poisoning Deaths Where Opioids Were Involved	Health Behaviors - Substance Abuse	Behavioral Health Services	Integral Care Riverside Clinic Austin (Children only)	2410 East Riverside Drive, Suite G-3	Austin	512-472-4357
Accidental Poisoning Deaths Where Opioids Were Involved	Health Behaviors - Substance Abuse	Behavioral Health Services	Integral Care Rundberg Clinic	825 East Rundberg Lane, Suite F-1	Austin	512-472-4357
Accidental Poisoning Deaths Where Opioids Were Involved	Health Behaviors - Substance Abuse	Behavioral Health Services	Lone Star Circle of Care at Lake Aire Medical Center	2423 Williams Drive, #108	Georgetown	877-800-5722
Accidental Poisoning Deaths Where Opioids Were Involved	Health Behaviors - Substance Abuse	Behavioral Health Services	Lone Star Circle of Care Behavioral Health Medical Center	2423 Williams Drive, Suite 108	Georgetown	877-800-5722
Accidental Poisoning Deaths Where Opioids Were Involved	Health Behaviors - Substance Abuse	Behavioral Health Services	North Central Health Center Dental Clinic	1210 West Braker Lane	Austin	512-978-9780
Accidental Poisoning Deaths Where Opioids Were Involved	Health Behaviors - Substance Abuse	Behavioral Health Services	Oak Hill Health Center	8656-A Hwy 71 W, Suite C	Austin	512-978-9820
Accidental Poisoning Deaths Where Opioids Were Involved	Health Behaviors - Substance Abuse	Behavioral Health Services	Samaritan Health Ministries	700 West Whitestone Blvd, Suite 3	Cedar Park	512-331-5828
Accidental Poisoning Deaths Where Opioids Were Involved	Health Behaviors - Substance Abuse	Behavioral Health Services	Samaritan Health Ministries	700 West Whitestone Blvd, Suite A	Cedar Park	512-331-5828
Accidental Poisoning Deaths Where Opioids Were Involved	Health Behaviors - Substance Abuse	Behavioral Health Services	Sandra Joy Anderson Community Health & Wellness Center	1725 East 11th Street	Austin	512-978-8400
Accidental Poisoning Deaths Where Opioids Were Involved	Health Behaviors - Substance Abuse	Behavioral Health Services	Senior Foundation	410 West Howard	Austin	888-236-4567
Accidental Poisoning Deaths Where Opioids Were Involved	Health Behaviors - Substance Abuse	Behavioral Health Services	Seton Shoal Creek	3501 Mills Avenue	Austin	512-324-2000
Accidental Poisoning Deaths Where Opioids Were Involved	Health Behaviors - Substance Abuse	Behavioral Health Services	South Austin Health Center	2529 South First Street	Austin	512-978-8400
Accidental Poisoning Deaths Where Opioids Were Involved	Health Behaviors - Substance Abuse	Behavioral Health Services	Starry Counseling	1300 North Mays	Round Rock	512-388-8290
Accidental Poisoning Deaths Where Opioids Were Involved	Health Behaviors - Substance Abuse	Behavioral Health Services	Taylor Psychotherapy	300 North Main Street	Taylor	512-365-2211

Williamson/Travis/Hays Counties Health Community  
Community Health Needs Assessment

COMMUNITY HEALTH NEED	CATEGORY	SERVICE	FACILITY NAME	ADDRESS	CITY	PHONE NUMBER
Accidental Poisoning Deaths Where Opioids Were Involved	Health Behaviors - Substance Abuse	Behavioral Health Services	Texas Star Recovery Program	1106 West Ditmar Road	Austin	800-252-5151
Accidental Poisoning Deaths Where Opioids Were Involved	Health Behaviors - Substance Abuse	Behavioral Health Services	Texas State University Counseling	1555 University Blvd	Round Rock	512-716-4250
Accidental Poisoning Deaths Where Opioids Were Involved	Health Behaviors - Substance Abuse	Behavioral Health Services	The Right Step Spirit Lodge	4701 West Gate Blvd	Austin	844-675-3958
Accidental Poisoning Deaths Where Opioids Were Involved	Health Behaviors - Substance Abuse	Behavioral Health Services	The Safe Alliance	4800 Manor Road	Austin	512-499-0090
Accidental Poisoning Deaths Where Opioids Were Involved	Health Behaviors - Substance Abuse	Behavioral Skills Training	Bluebonnet Trails Community Service- Hutto	101 Chris Kelley Blvd	Hutto	512-759-3980
Accidental Poisoning Deaths Where Opioids Were Involved	Health Behaviors - Substance Abuse	Behavioral Skills Training	Bluebonnet Trails Community Service- Taylor	404 Carlos G. Parker Blvd NW	Taylor	512-365-1600
Accidental Poisoning Deaths Where Opioids Were Involved	Health Behaviors - Substance Abuse	Daily Life Skills Training	Austin Resource Center for Independent Living (ARCIL, Inc.)	8200 Cameron Road, Suite C154	Austin	512-832-6349
Accidental Poisoning Deaths Where Opioids Were Involved	Health Behaviors - Substance Abuse	Daily Life Skills Training	Austin Resource Center for Independent Living (ARCIL, Inc.)	525 Round Rock West, Suite A120	Round Rock	512-828-4624
Accidental Poisoning Deaths Where Opioids Were Involved	Health Behaviors - Substance Abuse	Family Counseling	Bluebonnet Trails Community Services	1009 North Georgetown Street	Round Rock	844-309-6385
Accidental Poisoning Deaths Where Opioids Were Involved	Health Behaviors - Substance Abuse	Family Counseling	Bluebonnet Trails Community Services	1009 North Georgetown Street	Round Rock	844-309-6385
Accidental Poisoning Deaths Where Opioids Were Involved	Health Behaviors - Substance Abuse	Family Counseling	Cedar Park Community Based Outpatient Clinic	600 North Bell Blvd.	Cedar Park	512-219-2340
Accidental Poisoning Deaths Where Opioids Were Involved	Health Behaviors - Substance Abuse	Family Counseling	Starry Counseling	1300 North Mays	Round Rock	512-388-8290
Accidental Poisoning Deaths Where Opioids Were Involved	Health Behaviors - Substance Abuse	Family Counseling	Taylor Psychotherapy	300 North Main Street	Taylor	512-365-2211
Accidental Poisoning Deaths Where Opioids Were Involved	Health Behaviors - Substance Abuse	Family Counseling	The Safe Alliance	4800 Manor Road	Austin	512-499-0090
Accidental Poisoning Deaths Where Opioids Were Involved	Health Behaviors - Substance Abuse	Social Services	AIDS Services of Austin	7215 Cameron Road	Austin	512-458-2437
Accidental Poisoning Deaths Where Opioids Were Involved	Health Behaviors - Substance Abuse	Social Services	David Powell Health Center	4614 North IH 35	Austin	512-978-9100

Williamson/Travis/Hays Counties Health Community  
Community Health Needs Assessment

COMMUNITY HEALTH NEED	CATEGORY	SERVICE	FACILITY NAME	ADDRESS	CITY	PHONE NUMBER
Accidental Poisoning Deaths Where Opioids Were Involved	Health Behaviors - Substance Abuse	Substance Use Counseling	Alcoholics Anonymous Hill Country Intergroup	1825 Fort view Road, Suite 102	Austin	512-444-0071
Accidental Poisoning Deaths Where Opioids Were Involved	Health Behaviors - Substance Abuse	Substance Use Counseling	Austin Recovery Center	4201 South Congress Avenue #202	Austin	512-697-8600
Accidental Poisoning Deaths Where Opioids Were Involved	Health Behaviors - Substance Abuse	Substance Use Counseling	Bluebonnet Trails Community Service-Georgetown	711 North College Street	Georgetown	512-869-2650
Accidental Poisoning Deaths Where Opioids Were Involved	Health Behaviors - Substance Abuse	Substance Use Counseling	Bluebonnet Trails Community Services	711 North College Street	Georgetown	512-869-2650
Accidental Poisoning Deaths Where Opioids Were Involved	Health Behaviors - Substance Abuse	Substance Use Counseling	Integral Care Dove Springs Clinic South Austin	5015 South IH 35, Suite 200	Austin	512-472-4357
Accidental Poisoning Deaths Where Opioids Were Involved	Health Behaviors - Substance Abuse	Substance Use Counseling	Integral Care East 2nd Street Clinic	1631 East 2nd Street	Austin	512-472-4357
Accidental Poisoning Deaths Where Opioids Were Involved	Health Behaviors - Substance Abuse	Substance Use Counseling	Integral Care Riverside Clinic Austin (Children only)	2410 East Riverside Drive, Suite G-3	Austin	512-472-4357
Accidental Poisoning Deaths Where Opioids Were Involved	Health Behaviors - Substance Abuse	Substance Use Counseling	Integral Care Rundberg Clinic	825 East Rundberg Lane, Suite F-1	Austin	512-472-4357
Accidental Poisoning Deaths Where Opioids Were Involved	Health Behaviors - Substance Abuse	Substance Use Counseling	Narcotics Anonymous	1108 Lavaca Street, Suite 110-284	Austin	512-480-0004
Accidental Poisoning Deaths Where Opioids Were Involved	Health Behaviors - Substance Abuse	Substance Use Counseling	The Right Step Spirit Lodge	4701 West Gate Blvd	Austin	844-675-3958
Accidental Poisoning Deaths Where Opioids Were Involved	Health Behaviors - Substance Abuse	Substance Use Recovery Home	Austin Recovery Family House	13207 Wright Road	Austin	512-697-8600
Accidental Poisoning Deaths Where Opioids Were Involved	Health Behaviors - Substance Abuse	Substance Use Services	Austin Recovery Center	4201 South Congress Avenue #202	Austin	512-697-8600
Accidental Poisoning Deaths Where Opioids Were Involved	Health Behaviors - Substance Abuse	Substance Use Services	Bluebonnet Trails Community Service-Georgetown	711 North College Street	Georgetown	512-869-2650
Accidental Poisoning Deaths Where Opioids Were Involved	Health Behaviors - Substance Abuse	Substance Use Services	Bluebonnet Trails Community Services	711 North College Street	Georgetown	512-869-2650
Accidental Poisoning Deaths Where Opioids Were Involved	Health Behaviors - Substance Abuse	Substance Use Services	Narcotics Anonymous	1108 Lavaca Street, Suite 110-284	Austin	512-480-0004

Williamson/Travis/Hays Counties Health Community  
Community Health Needs Assessment

COMMUNITY HEALTH NEED	CATEGORY	SERVICE	FACILITY NAME	ADDRESS	CITY	PHONE NUMBER
Accidental Poisoning Deaths Where Opioids Were Involved	Health Behaviors - Substance Abuse	Substance Use Services	Senior Foundation	410 West Howard	Austin	888-236-4567
Accidental Poisoning Deaths Where Opioids Were Involved	Health Behaviors - Substance Abuse	Substance Use Services	Seton Shoal Creek	3501 Mills Avenue	Austin	512-324-2000
Accidental Poisoning Deaths Where Opioids Were Involved	Health Behaviors - Substance Abuse	Substance Use Services	Texas Star Recovery Program	1106 West Ditmar Road	Austin	800-252-5151
Accidental Poisoning Deaths Where Opioids Were Involved	Health Behaviors - Substance Abuse	Substance Use Services	The Right Step Spirit Lodge	4701 West Gate Blvd	Austin	844-675-3958
Intentional Self-Harm; Suicide	Mental Health	Behavioral Skills Training	Bluebonnet Trails Community Service- Hutto	101 Chris Kelley Blvd	Hutto	512-759-3980
Intentional Self-Harm; Suicide	Mental Health	Behavioral Skills Training	Bluebonnet Trails Community Service- Taylor	404 Carlos G. Parker Blvd NW	Taylor	512-365-1600
Intentional Self-Harm; Suicide	Mental Health	Crisis Services	Bluebonnet Trails Community Services	711 North College Street	Georgetown	512-869-2650
Intentional Self-Harm; Suicide	Mental Health	Crisis Services	Bluebonnet Trails Community Services	1009 North Georgetown Street	Round Rock	844-309-6385
Intentional Self-Harm; Suicide	Mental Health	Crisis Services	Bluebonnet Trails Community Services	1009 North Georgetown Street	Round Rock	844-309-6385
Intentional Self-Harm; Suicide	Mental Health	Crisis Services	San Gabriel Crisis Center	711 North College Street	Georgetown	512-869-2650
Intentional Self-Harm; Suicide	Mental Health	Crisis Services	Starry Counseling	1300 North Mays	Round Rock	512-388-8290
Intentional Self-Harm; Suicide	Mental Health	Crisis Services	The Safe Alliance	1515 Grove Blvd	Austin	512-267-7233
Intentional Self-Harm; Suicide	Mental Health	Family Counseling	Bluebonnet Trails Community Services	1009 North Georgetown Street	Round Rock	844-309-6385
Intentional Self-Harm; Suicide	Mental Health	Family Counseling	Bluebonnet Trails Community Services	1009 North Georgetown Street	Round Rock	844-309-6385
Intentional Self-Harm; Suicide	Mental Health	Family Counseling	Cedar Park Community Based Outpatient Clinic	600 North Bell Blvd.	Cedar Park	512-219-2340
Intentional Self-Harm; Suicide	Mental Health	Family Counseling	Starry Counseling	1300 North Mays	Round Rock	512-388-8290
Intentional Self-Harm; Suicide	Mental Health	Family Counseling	Taylor Psychotherapy	300 North Main Street	Taylor	512-365-2211

Williamson/Travis/Hays Counties Health Community  
Community Health Needs Assessment

COMMUNITY HEALTH NEED	CATEGORY	SERVICE	FACILITY NAME	ADDRESS	CITY	PHONE NUMBER
Intentional Self-Harm; Suicide	Mental Health	Family Counseling	The Safe Alliance	4800 Manor Road	Austin	512-499-0090
Intentional Self-Harm; Suicide	Mental Health	General Psychiatry	Bluebonnet Trails Community Service-Georgetown	711 North College Street	Georgetown	512-869-2650
Intentional Self-Harm; Suicide	Mental Health	General Psychiatry	Bluebonnet Trails Community Service- Hutto	101 Chris Kelley Blvd	Hutto	512-759-3980
Intentional Self-Harm; Suicide	Mental Health	General Psychiatry	Bluebonnet Trails Community Service- Taylor	404 Carlos G. Parker Blvd NW	Taylor	512-365-1600
Intentional Self-Harm; Suicide	Mental Health	General Psychiatry	Bluebonnet Trails Community Services	711 North College Street	Georgetown	512-869-2650
Intentional Self-Harm; Suicide	Mental Health	General Psychiatry	Bluebonnet Trails Community Services	1009 North Georgetown Street	Round Rock	844-309-6385
Intentional Self-Harm; Suicide	Mental Health	General Psychiatry	Bluebonnet Trails Community Services	1009 North Georgetown Street	Round Rock	844-309-6385
Intentional Self-Harm; Suicide	Mental Health	General Psychiatry	David Powell Health Center	4614 North IH 35	Austin	512-978-9100
Intentional Self-Harm; Suicide	Mental Health	General Psychiatry	Dell Children's Circle of Care at Hutto	123 Ed Schmidt Blvd, Suite 140	Hutto	877-800-5722
Intentional Self-Harm; Suicide	Mental Health	General Psychiatry	Dell Children's Circle of Care Pediatrics Medical Center	2423 Williams Drive, Suite 103	Georgetown	877-800-5722
Intentional Self-Harm; Suicide	Mental Health	General Psychiatry	East Austin Health Center	211 Comal Street	Austin	512-978-9200
Intentional Self-Harm; Suicide	Mental Health	General Psychiatry	Lone Star Circle of Care Senior Health Center	2423 Williams Drive, Suite 113	Georgetown	877-800-5722
Intentional Self-Harm; Suicide	Mental Health	General Psychiatry	North Central Health Center Dental Clinic	1210 West Braker Lane	Austin	512-978-9780
Intentional Self-Harm; Suicide	Mental Health	General Psychiatry	Oak Hill Health Center	8656-A Hwy 71 W, Suite C	Austin	512-978-9820
Intentional Self-Harm; Suicide	Mental Health	General Psychiatry	Pflugerville Health Center	15822 Foothill Farms Loop	Pflugerville	512-978-9840
Intentional Self-Harm; Suicide	Mental Health	General Psychiatry	Rundberg Health Center	825 East Rundberg Lane, Suite B-1	Austin	512-978-9600

COMMUNITY HEALTH NEED	CATEGORY	SERVICE	FACILITY NAME	ADDRESS	CITY	PHONE NUMBER
Intentional Self-Harm; Suicide	Mental Health	General Psychiatry	Sandra Joy Anderson Community Health & Wellness Center	1725 East 11th Street	Austin	512-978-8400
Intentional Self-Harm; Suicide	Mental Health	General Psychiatry	Seton Shoal Creek	3501 Mills Avenue	Austin	512-324-2000
Intentional Self-Harm; Suicide	Mental Health	General Psychiatry	South Austin Health Center	2529 South First Street	Austin	512-978-8400
Intentional Self-Harm; Suicide	Mental Health	General Psychiatry	Southeast Health and Wellness Center	2901 Montopolis Drive	Austin	512-978-9901
Intentional Self-Harm; Suicide	Mental Health	General Psychiatry	Texas Star Recovery Program	1106 West Ditmar Road	Austin	800-252-5151
Intentional Self-Harm; Suicide	Mental Health	General Psychology	Taylor Psychotherapy	300 North Main Street	Taylor	512-365-2211
Intentional Self-Harm; Suicide	Mental Health	Help Hotlines	Austin Resource Center for Independent Living (ARCIL, Inc.)	8200 Cameron Road, Suite C154	Austin	512-832-6349
Intentional Self-Harm; Suicide	Mental Health	Help Hotlines	Austin Resource Center for Independent Living (ARCIL, Inc.)	525 Round Rock West, Suite A120	Round Rock	512-828-4624
Intentional Self-Harm; Suicide	Mental Health	Help Hotlines	Bluebonnet Trails Community Services	1009 North Georgetown Street	Round Rock	844-309-6385
Intentional Self-Harm; Suicide	Mental Health	Help Hotlines	Bluebonnet Trails Community Services	1009 North Georgetown Street	Round Rock	844-309-6385
Intentional Self-Harm; Suicide	Mental Health	Help Hotlines	Hope Alliance	1011 Gattis School Road, Suite 106	Round Rock	800-460-7233
Intentional Self-Harm; Suicide	Mental Health	Help Hotlines	San Gabriel Crisis Center	711 North College Street	Georgetown	512-869-2650
Intentional Self-Harm; Suicide	Mental Health	Help Hotlines	Starry Counseling	1300 North Mays	Round Rock	512-388-8290
Intentional Self-Harm; Suicide	Mental Health	Help Hotlines	Texas Rio Grande Legal Aid	4920 North Interstate 35	Austin	888-988-9996
Intentional Self-Harm; Suicide	Mental Health	Help Hotlines	Volunteer Legal Services of Central Texas	1601 Haskell Street	Austin	512-476-5550
Intentional Self-Harm; Suicide	Mental Health	Help Hotlines	Volunteer Legal Services of Central Texas	601 East St. John	Austin	512-476-5550



COMMUNITY HEALTH NEED	CATEGORY	SERVICE	FACILITY NAME	ADDRESS	CITY	PHONE NUMBER
Intentional Self-Harm; Suicide	Mental Health	Help Hotlines	Williamson-Burnet County Opportunities, Inc. (WBCO)	110 South Brown	Georgetown	512-255-2202
Intentional Self-Harm; Suicide	Mental Health	Medications for Mental Health	Dell Children's Circle of Care at Hutto	123 Ed Schmidt Blvd, Suite 140	Hutto	877-800-5722
Intentional Self-Harm; Suicide	Mental Health	Medications for Mental Health	Lone Star Circle of Care at Lake Aire Medical Center	2423 Williams Drive, #108	Georgetown	877-800-5722
Intentional Self-Harm; Suicide	Mental Health	Medications for Mental Health	Lone Star Circle of Care Behavioral Health Medical Center	2423 Williams Drive, Suite 108	Georgetown	877-800-5722
Intentional Self-Harm; Suicide	Mental Health	Mental Health Evaluation	Bluebonnet Trails Community Service-Georgetown	711 North College Street	Georgetown	512-869-2650
Intentional Self-Harm; Suicide	Mental Health	Mental Health Evaluation	Bluebonnet Trails Community Services	1009 North Georgetown Street	Round Rock	844-309-6385
Intentional Self-Harm; Suicide	Mental Health	Mental Health Evaluation	Bluebonnet Trails Community Services	1009 North Georgetown Street	Round Rock	844-309-6385
Intentional Self-Harm; Suicide	Mental Health	Mental Health Evaluation	Dell Children's Circle of Care Pediatrics Medical Center	2423 Williams Drive, Suite 103	Georgetown	877-800-5722
Intentional Self-Harm; Suicide	Mental Health	Mental Health Evaluation	Lone Star Circle of Care Behavioral Health Medical Center	2423 Williams Drive, Suite 108	Georgetown	877-800-5722
Intentional Self-Harm; Suicide	Mental Health	Mental Health Evaluation	Texas State University Counseling	1555 University Blvd	Round Rock	512-716-4250
Intentional Self-Harm; Suicide	Mental Health	Mental Health Hospital Treatment	Austin Lakes Hospital	1025 East 32nd Street @ St. David's Pavilion	Austin	512-544-5253
Intentional Self-Harm; Suicide	Mental Health	Mental Health Services	Behavioral Health at Round Rock Health Clinic	2120 North Mays Street, Suite 430	Round Rock	877-800-5722
Intentional Self-Harm; Suicide	Mental Health	Mental Health Services	Bluebonnet Trails Community Service-Georgetown	711 North College Street	Georgetown	512-869-2650
Intentional Self-Harm; Suicide	Mental Health	Mental Health Services	Bluebonnet Trails Community Services	1009 North Georgetown Street	Round Rock	844-309-6385
Intentional Self-Harm; Suicide	Mental Health	Mental Health Services	Bluebonnet Trails Community Services	1009 North Georgetown Street	Round Rock	844-309-6385



COMMUNITY HEALTH NEED	CATEGORY	SERVICE	FACILITY NAME	ADDRESS	CITY	PHONE NUMBER
Intentional Self-Harm; Suicide	Mental Health	Mental Health Services	David Powell Health Center	4614 North IH 35	Austin	512-978-9100
Intentional Self-Harm; Suicide	Mental Health	Mental Health Services	Dell Children's Circle of Care Pediatrics Medical Center	2423 Williams Drive, Suite 103	Georgetown	877-800-5722
Intentional Self-Harm; Suicide	Mental Health	Mental Health Services	Integral Care Psychiatric Emergency Services	1165 Airport Blvd, 2nd Floor	Austin	512-472-4357
Intentional Self-Harm; Suicide	Mental Health	Mental Health Services	Lone Star Circle of Care Behavioral Health Medical Center	2423 Williams Drive, Suite 108	Georgetown	877-800-5722
Intentional Self-Harm; Suicide	Mental Health	Mental Health Services	Samaritan Health Ministries	700 West Whitestone Blvd, Suite 3	Cedar Park	512-331-5828
Intentional Self-Harm; Suicide	Mental Health	Mental Health Services	Samaritan Health Ministries	700 West Whitestone Blvd, Suite A	Cedar Park	512-331-5828
Intentional Self-Harm; Suicide	Mental Health	Mental Health Services	Texas State University Counseling	1555 University Blvd	Round Rock	512-716-4250
Intentional Self-Harm; Suicide	Mental Health	Mental Health Services	Williamson County Veterans Services	3151 Southeast Inner Loop	Georgetown	512-943-1900
Intentional Self-Harm; Suicide	Mental Health	Social Services	AIDS Services of Austin	7215 Cameron Road	Austin	512-458-2437
Intentional Self-Harm; Suicide	Mental Health	Social Services	David Powell Health Center	4614 North IH 35	Austin	512-978-9100
Ratio of Population to One Non-Physician Primary Care Provider	Mental Health	Primary Care	AIDS Services of Austin	7215 Cameron Road	Austin	512-458-2437
Ratio of Population to One Non-Physician Primary Care Provider	Mental Health	Primary Care	Ben White Health Clinic	1221 West Ben White, Suite 200	Austin	877-800-5722
Ratio of Population to One Non-Physician Primary Care Provider	Mental Health	Primary Care	Blackstock Health Center	1313 Red River Street, Suite 100	Austin	512-978-9610
Ratio of Population to One Non-Physician Primary Care Provider	Mental Health	Primary Care	Bluebonnet Trails Community Service- Hutto	101 Chris Kelley Blvd	Hutto	512-759-3980
Ratio of Population to One Non-Physician Primary Care Provider	Mental Health	Primary Care	Bluebonnet Trails Community Services	1009 North Georgetown Street	Round Rock	844-309-6385
Ratio of Population to One Non-Physician Primary Care Provider	Mental Health	Primary Care	Bluebonnet Trails Community Services	1009 North Georgetown Street	Round Rock	844-309-6385

COMMUNITY HEALTH NEED	CATEGORY	SERVICE	FACILITY NAME	ADDRESS	CITY	PHONE NUMBER
Ratio of Population to One Non-Physician Primary Care Provider	Mental Health	Primary Care	Cedar Park Community Based Outpatient Clinic	600 North Bell Blvd.	Cedar Park	512-219-2340
Ratio of Population to One Non-Physician Primary Care Provider	Mental Health	Primary Care	Community Care Health Centers - Hancock Walk In Care	1000 East 41st Street, Suite 925	Austin	512-978-9940
Ratio of Population to One Non-Physician Primary Care Provider	Mental Health	Primary Care	Community Care Health Centers - Manor Health Center	600 West Carrie-Manor	Manor	512-978-9780
Ratio of Population to One Non-Physician Primary Care Provider	Mental Health	Primary Care	Community Care Health Centers - William Cannon Walk-In Care	6801 S IH 35 #1-E Austin	Austin	512-978-9960
Ratio of Population to One Non-Physician Primary Care Provider	Mental Health	Primary Care	Complex Primary Care	1400 N IH 35, Suite 2.450	Austin	512-978-8080
Ratio of Population to One Non-Physician Primary Care Provider	Mental Health	Primary Care	David Powell Health Center	4614 North IH 35	Austin	512-978-9100
Ratio of Population to One Non-Physician Primary Care Provider	Mental Health	Primary Care	Del Valle Center	3518 FM 973	Del Valle	512-978-9670
Ratio of Population to One Non-Physician Primary Care Provider	Mental Health	Primary Care	Del Valle Center	3518 FM 973	Del Valle	512-978-9670
Ratio of Population to One Non-Physician Primary Care Provider	Mental Health	Primary Care	Dell Children's Circle of Care at Hutto	123 Ed Schmidt Blvd, Suite 140	Hutto	877-800-5722
Ratio of Population to One Non-Physician Primary Care Provider	Mental Health	Primary Care	Dell Children's Circle of Care at Whitestone	1730 East Whitestone Blvd., Suite 101	Cedar Park	877-800-5722
Ratio of Population to One Non-Physician Primary Care Provider	Mental Health	Primary Care	Dell Children's Circle of Care Pediatrics at Round Rock Heal	2120 North Mays Street, Suite 430	Round Rock	877-800-5722
Ratio of Population to One Non-Physician Primary Care Provider	Mental Health	Primary Care	Dell Children's Circle of Care Pediatrics at Texas A&M Health	3950 North AW Grimes N 201	Round Rock	877-800-5722
Ratio of Population to One Non-Physician Primary Care Provider	Mental Health	Primary Care	Dell Children's Medical Center of Central Texas/UTSW Adult	4900 Mueller Blvd., Austin, TX 78723	Austin	512-324-0060
Ratio of Population to One Non-Physician Primary Care Provider	Mental Health	Primary Care	Family Medicine at Lake Aire Center	2423 Williams Drive, #105	Georgetown	877-800-5722
Ratio of Population to One Non-Physician Primary Care Provider	Mental Health	Primary Care	Immunization Branch	1100 West 49th Street	Austin	512-458-7284

COMMUNITY HEALTH NEED	CATEGORY	SERVICE	FACILITY NAME	ADDRESS	CITY	PHONE NUMBER
Ratio of Population to One Non-Physician Primary Care Provider	Mental Health	Primary Care	Lone Star Circle of Care at Collinfield	8913 Collinfield Drive, Unit 1	Austin	877-800-5722
Ratio of Population to One Non-Physician Primary Care Provider	Mental Health	Primary Care	Lone Star Circle of Care at Stassney Pediatrics	730 West Stassney, Suite 110	Austin	877-800-5722
Ratio of Population to One Non-Physician Primary Care Provider	Mental Health	Primary Care	Lone Star Circle of Care Family Medicine	2423 Williams Drive, Suite 105	Georgetown	877-800-5722
Ratio of Population to One Non-Physician Primary Care Provider	Mental Health	Primary Care	Lone Star Circle of Care Georgetown Community Clinic	701 East University Avenue	Georgetown	512-863-9208
Ratio of Population to One Non-Physician Primary Care Provider	Mental Health	Primary Care	Lone Star Circle of Care Pediatrics at Lake Aire Medical Cen	2423 Williams Drive, #103	Georgetown	877-800-5722
Ratio of Population to One Non-Physician Primary Care Provider	Mental Health	Primary Care	Lone Star Circle of Care Senior Health Center	2423 Williams Drive, Suite 113	Georgetown	877-800-5722
Ratio of Population to One Non-Physician Primary Care Provider	Mental Health	Primary Care	North Central Health Center Dental Clinic	1210 West Braker Lane	Austin	512-978-9780
Ratio of Population to One Non-Physician Primary Care Provider	Mental Health	Primary Care	Oak Hill Health Center	8656-A Hwy 71 W, Suite C	Austin	512-978-9820
Ratio of Population to One Non-Physician Primary Care Provider	Mental Health	Primary Care	Pflugerville Health Center	15822 Foothill Farms Loop	Pflugerville	512-978-9840
Ratio of Population to One Non-Physician Primary Care Provider	Mental Health	Primary Care	Rundberg Health Center	825 East Rundberg Lane, Suite B-1	Austin	512-978-9600
Ratio of Population to One Non-Physician Primary Care Provider	Mental Health	Primary Care	Sacred Heart Community Clinic (SHCC)	620 Round Rock West Drive	Round Rock	512-827-7422
Ratio of Population to One Non-Physician Primary Care Provider	Mental Health	Primary Care	Samaritan Health Ministries	700 West Whitestone Blvd, Suite A	Cedar Park	512-331-5828
Ratio of Population to One Non-Physician Primary Care Provider	Mental Health	Primary Care	Samaritan Health Ministries	700 West Whitestone Blvd, Suite 3	Cedar Park	512-331-5828
Ratio of Population to One Non-Physician Primary Care Provider	Mental Health	Primary Care	Sandra Joy Anderson Community Health & Wellness Center	1725 East 11th Street	Austin	512-978-8400
Ratio of Population to One Non-Physician Primary Care Provider	Mental Health	Primary Care	Seaton Circle of Care Family Medicine	1111 Research Blvd., Suite 320	Austin	877-800-5722

Williamson/Travis/Hays Counties Health Community  
Community Health Needs Assessment

COMMUNITY HEALTH NEED	CATEGORY	SERVICE	FACILITY NAME	ADDRESS	CITY	PHONE NUMBER
Ratio of Population to One Non-Physician Primary Care Provider	Mental Health	Primary Care	Senior Health at Lake Aire Medical Center	2423 Williams Drive, #113	Georgetown	877-800-5722
Ratio of Population to One Non-Physician Primary Care Provider	Mental Health	Primary Care	Seton Circle of Care	1111 Research Blvd., Suite 295	Austin	877-800-5722
Ratio of Population to One Non-Physician Primary Care Provider	Mental Health	Primary Care	Seton Circle of Care Family Medicine at Texas A&M Health Sci	3950 North AW Grimes N301A & N 202	Round Rock	877-800-5722
Ratio of Population to One Non-Physician Primary Care Provider	Mental Health	Primary Care	Seton Circle of Care Senior Care at Texas A&M Health Science	3950 North AW Grimes N104	Round Rock	877-800-5722
Ratio of Population to One Non-Physician Primary Care Provider	Mental Health	Primary Care	Seton Circle of Care Women's Services	1111 Research Blvd., Suite 295	Austin	877-800-5722
Ratio of Population to One Non-Physician Primary Care Provider	Mental Health	Primary Care	Seton Circle of Care Women's Services at Texas A&M Health Sc	3950 North AW Grimes N103	Round Rock	877-800-5722
Ratio of Population to One Non-Physician Primary Care Provider	Mental Health	Primary Care	South Austin Health Center	2529 South First Street	Austin	512-978-8400
Ratio of Population to One Non-Physician Primary Care Provider	Mental Health	Primary Care	Southeast Health and Wellness Center	2901 Montopolis Drive	Austin	512-978-9901
Ratio of Population to One Non-Physician Primary Care Provider	Mental Health	Primary Care	WIC Williamson County	100 West 3rd Street	Georgetown	512-943-3680
Ratio of Population to One Non-Physician Primary Care Provider	Mental Health	Primary Care	WIC Williamson County	211 Commerce Blvd #115	Round Rock	512-248-3254
Ratio of Population to One Non-Physician Primary Care Provider	Mental Health	Primary Care	WIC Williamson County	350 Discovery Blvd, Suite 102	Cedar Park	512-260-4241

*Community Healthcare Facilities*

Facility Name	Type	System	Street Address	City	State	ZIP
ARISE AUSTIN MEDICAL CENTER	ST	Surgery Partners	3003 BEE CAVE ROAD	AUSTIN	TX	78746
AUSTIN EMERGENCY CENTER	ED	Austin Emergency Center	3563 FAR WEST BOULEVARD	AUSTIN	TX	78731
AUSTIN EMERGENCY CENTER	ED	Austin Emergency Center	4015 SOUTH LAMAR	AUSTIN	TX	78704
AUSTIN EMERGENCY CENTER ANDERSON MILL	ED	Austin Emergency Center	13435 US HIGHWAY 183 N SUITE 311	AUSTIN	TX	78750
AUSTIN LAKES HOSPITAL	PSY	Universal Health Services	1025 EAST 32ND STREET	AUSTIN	TX	78705
AUSTIN OAKS HOSPITAL	PSY	Freestanding	1407 WEST STASSNEY LANE	AUSTIN	TX	78745
BAYLOR SCOTT & WHITE EMERGENCY MEDICAL CENTER CEDAR PARK	ST	Baylor Scott & White	900 EAST WHITESTONE BLVD	CEDAR PARK	TX	78613
BAYLOR SCOTT & WHITE MEDICAL CENTER - LAKEWAY	ST	Baylor Scott & White	100 MEDICAL PARKWAY	LAKEWAY	TX	78738
BAYLOR SCOTT & WHITE MEDICAL CENTER - ROUND ROCK	ST	Baylor Scott & White	300 UNIVERSITY BLVD	ROUND ROCK	TX	78665
BAYLOR SCOTT & WHITE MEDICAL CENTER - TAYLOR	ST	Baylor Scott & White	305 MALLARD LANE	TAYLOR	TX	76574
CEDAR PARK EMERGENCY CENTER	ED	Freestanding	3620 WHITESTONE BLVD EAST	CEDAR PARK	TX	78613
CEDAR PARK REGIONAL MEDICAL CENTER	ST	Ascension Health	1401 MEDICAL PARKWAY	CEDAR PARK	TX	78613
CENTRAL TEXAS MEDICAL CENTER	ST	Adventist Health	1301 WONDER WORLD DRIVE	SAN MARCOS	TX	78666

Facility Name	Type	System	Street Address	City	State	ZIP
CENTRAL TEXAS REHABILITATION HOSPITAL	LT	Ascension Health	700 W 45TH STREET	AUSTIN	TX	78751
CORNERSTONE HOSPITAL AUSTIN	LT	Cornerstone Healthcare Group	4207 BURNET ROAD	AUSTIN	TX	78756
CORNERSTONE HOSPITAL AUSTIN - ROUND ROCK	LT	Cornerstone Healthcare Group	4681 COLLEGE PARK DRIVE	ROUND ROCK	TX	78665
CROSS CREEK HOSPITAL	PSY	Freestanding	8402 CROSS PARK DRIVE	AUSTIN	TX	78754
DELL CHILDRENS MEDICAL CENTER	KID	Ascension Health	4900 MUELLER BLVD	AUSTIN	TX	78723
DELL SETON MEDICAL CENTER AT THE UNIVERSITY OF TEXAS	ST	Ascension Health	1500 RED RIVER STREET	AUSTIN	TX	78701
FAMILY EMERGENCY ROOM ROUND ROCK	ED	Freestanding	1925 AW GRIMES	ROUND ROCK	TX	78664
FIRST CHOICE EMERGENCY ROOM	ED	First Choice	10407 JOLLYVILLE ROAD	AUSTIN	TX	78759
FIRST CHOICE EMERGENCY ROOM	ED	First Choice	1501 FM 685	PFLUGERVILLE	TX	78660
FIRST CHOICE EMERGENCY ROOM	ED	First Choice	15100 FM ROAD 1825	PFLUGERVILLE	TX	78660
FIRST CHOICE EMERGENCY ROOM	ED	First Choice	2020 E RIVERSIDE DRIVE	AUSTIN	TX	78741
FIRST CHOICE EMERGENCY ROOM	ED	First Choice	9312 BRODIE LANE	AUSTIN	TX	78748
FIVE STAR ER	ED	Ascension Health	1700 ROUND ROCK AVE	ROUND ROCK	TX	78681
FIVE STAR ER	ED	Ascension Health	21315 N SH 130 BLDG 4	PFLUGERVILLE	TX	78660

Facility Name	Type	System	Street Address	City	State	ZIP
FIVE STAR ER	ED	Ascension Health	333 E HIGHWAY 290	DRIPPING SPRINGS	TX	78620
FIVE STAR ER	ED	Ascension Health	8721 MANCHACA	AUSTIN	TX	78749
GEORGETOWN BEHAVIORAL HEALTH INSTITUTE LLC	PSY	Aurora Behavioral Health Care	3101 S AUSTIN AVE	GEORGETOWN	TX	78626
HEALTHSOUTH REHABILITATION HOSPITAL OF AUSTIN	LT	HealthSouth	330 WEST BEN WHITE BLVD	AUSTIN	TX	78704
HEALTHSOUTH REHABILITATION HOSPITAL OF ROUND ROCK	LT	HealthSouth	1400 HESTERS CROSSING	ROUND ROCK	TX	78681
HEART HOSPITAL OF AUSTIN, A CAMPUS OF ST DAVIDS MEDICAL CENTER	ST	Hospital Corporation of America	3801 NORTH LAMAR	AUSTIN	TX	78756
KYLE ER	ED	Nutex Health	5615 KYLE CENTER DRIVE	KYLE	TX	78640
LAKE TRAVIS ER LLC	ED	Freestanding	5012 N FM 620 RD	AUSTIN	TX	78732
LAKEWAY COMPLETE CARE LLC	ED	Complete Care	1518 RANCH ROAD 620 SOUTH SUITE 200	LAKEWAY	TX	78734
MY EMERGENCY ROOM	ED	My Emergency Room	2810 SOUTH INTERSTATE 35	SAN MARCOS	TX	78666
NEIGHBORS EMERGENCY CENTER (MUELLER)	ED	Neighbors	1801 E 51ST STREET (BLDG H)	AUSTIN	TX	78723
NORTH AUSTIN MEDICAL CENTER	ST	Hospital Corporation of America	12221 MOPAC EXPRESSWAY NORTH	AUSTIN	TX	78758
NORTHWEST HILLS SURGICAL HOSPITAL	ST	Surgical Care Affiliates	6818 AUSTIN CENTER BOULEVARD	AUSTIN	TX	78731
ROCK SPRINGS	PSY	Springstone	700 SOUTHEAST INNER LOOP	GEORGETOWN	TX	78626



Facility Name	Type	System	Street Address	City	State	ZIP
ROUND ROCK MEDICAL CENTER	ST	Hospital Corporation of America	2400 ROUND ROCK AVENUE	ROUND ROCK	TX	78681
SETON MEDICAL CENTER AUSTIN	ST	Ascension Health	1201 WEST 38TH STREET	AUSTIN	TX	78705
SETON MEDICAL CENTER HAYS	ST	Ascension Health	6001 KYLE PARKWAY	KYLE	TX	78640
SETON MEDICAL CENTER WILLIAMSON	ST	Ascension Health	201 SETON PARKWAY	ROUND ROCK	TX	78665
SETON NORTHWEST HOSPITAL	ST	Ascension Health	11113 RESEARCH BOULEVARD	AUSTIN	TX	78759
SETON SHOAL CREEK HOSPITAL	PSY	Ascension Health	3501 MILLS AVENUE	AUSTIN	TX	78731
SETON SOUTHWEST HOSPITAL	ST	Ascension Health	7900 FM 1826	AUSTIN	TX	78737
SIGNATURECARE - SOUTH AUSTIN	ED	Signaturecare	5701 W SLAUGHTER LANE BLDG G	AUSTIN	TX	78749
ST DAVIDS GEORGETOWN HOSPITAL A ST DAVIDS MEDICAL CENTER FACILI	ST	Hospital Corporation of America	2000 SCENIC DRIVE	GEORGETOWN	TX	78626
ST DAVIDS MEDICAL CENTER	ST	Hospital Corporation of America	919 EAST 32ND STREET	AUSTIN	TX	78705
ST DAVIDS REHABILITATION HOSPITAL, A ST DAVIDS MEDICAL CENTER	LT	Hospital Corporation of America	1005 EAST 32ND STREET	AUSTIN	TX	78705
ST DAVIDS SOUTH AUSTIN MEDICAL CENTER	ST	Hospital Corporation of America	901 WEST BEN WHITE BOULEVARD	AUSTIN	TX	78704
ST DAVIDS SURGICAL HOSPITAL A CAMPUS OF NORTH AUSTIN MEDICAL CTR	ST	Hospital Corporation of America	1201 W LOUIS HENNA BLVD	AUSTIN	TX	78681
TEXAS NEUROREHAB CENTER	LT	Universal Health Services	1106 WEST DITTMAR BUILDING 9	AUSTIN	TX	78745

Facility Name	Type	System	Street Address	City	State	ZIP
TEXAS NEUROREHAB CENTER	PSY	Universal Health Services	1106 WEST DITTMAR BUILDING 1 & 15	AUSTIN	TX	78745
THE HOSPITAL AT WESTLAKE MEDICAL CENTER	ST	Freestanding	5656 BEE CAVES ROAD STE M-302	AUSTIN	TX	78746
VIBRA REHABILITATION HOSPITAL OF LAKE TRAVIS	LT	Baylor Scott & White	2000 MEDICAL DRIVE	LAKEWAY	TX	78734
WARM SPRINGS REHABILITATION HOSPITAL OF KYLE	LT	Post Acute Medical	5980 KYLE PARKWAY	KYLE	TX	78640
WELLBRIDGE HOSPITAL OF SAN MARCOS	PSY	Wellbridge Health	1106 N IH 35	SAN MARCOS	TX	78666
WESTLAKE COMPLETE CARE LLC	ED	Complete Care	6836 BEE CAVES RD SUITE 112	AUSTIN	TX	78746

\*Type: ST=short-term; LT=long-term, PSY=psychiatric, KID = pediatric, ED = Freestanding ED

**Appendix C: Federally Designated Health Professional Shortage Areas and Medically Underserved Areas and Populations**

Health Professional Shortage Areas (HPSA)<sup>14</sup>

County Name	HPSA ID	HPSA Name	HPSA Discipline Class	Designation Type
Hays	1486496164	Low Income - Hays County	Primary Care	Low Income Population HPSA
Travis	7485886683	Low Income - Travis County	Mental Health	Low Income Population HPSA
Travis	14899948OW	Travis County Healthcare District/Dbc Communitycare	Primary Care	Federally Qualified Health Center
Travis	14899948PB	People's Community Clinic	Primary Care	Federally Qualified Health Center
Travis	64899948MM	Travis County Healthcare District/Dbc Communitycare	Dental Health	Federally Qualified Health Center
Travis	64899948MS	People's Community Clinic	Dental Health	Federally Qualified Health Center
Travis	74899948MI	Travis County Healthcare District/Dbc Communitycare	Mental Health	Federally Qualified Health Center
Travis	74899948MR	People's Community Clinic	Mental Health	Federally Qualified Health Center
Williamson	148999487E	Lone Star Circle of Care	Primary Care	Federally Qualified Health Center
Williamson	14899948B8	Immigration and Customs Enforcement - Taylor	Primary Care	Correctional Facility

<sup>14</sup> U.S. Department of Health and Human Services, Health Resources and Services Administration, 2018

County Name	HPSA ID	HPSA Name	HPSA Discipline Class	Designation Type
Williamson	64899948H7	Lone Star Circle of Care	Dental Health	Federally Qualified Health Center
Williamson	64899948MD	Immigration and Customs Enforcement - Taylor	Dental Health	Correctional Facility
Williamson	748999484B	Lone Star Circle of Care	Mental Health	Federally Qualified Health Center
Williamson	74899948M7	Immigration and Customs Enforcement - Taylor	Mental Health	Correctional Facility
Waller	1484382331	Waller County	Primary Care	Geographic HPSA
Waller	7484226314	Waller County	Mental Health	High Needs Geographic HPSA
Washington	1485145906	Low Income-Washington County	Primary Care	Low Income Population HPSA
Washington	7483005436	Washington County	Mental Health	Geographic HPSA

*Medically Underserved Areas and Populations (MUA/P)<sup>15</sup>*

County Name	MUA/P Source Identification Number	Service Area Name	Designation Type	Rural Status
Hays	3347	Hays Service Area	Medically Underserved Area	Partially Rural
Travis	3484	Travis Service Area	Medically Underserved Area	Non-Rural
Williamson	3445	Williamson Service Area	Medically Underserved Area	Non-Rural

<sup>15</sup> U.S. Department of Health and Human Services, Health Resources and Services Administration, 201

**Appendix D: Public Health Indicators Showing Greater Need When Compared to State Benchmark**

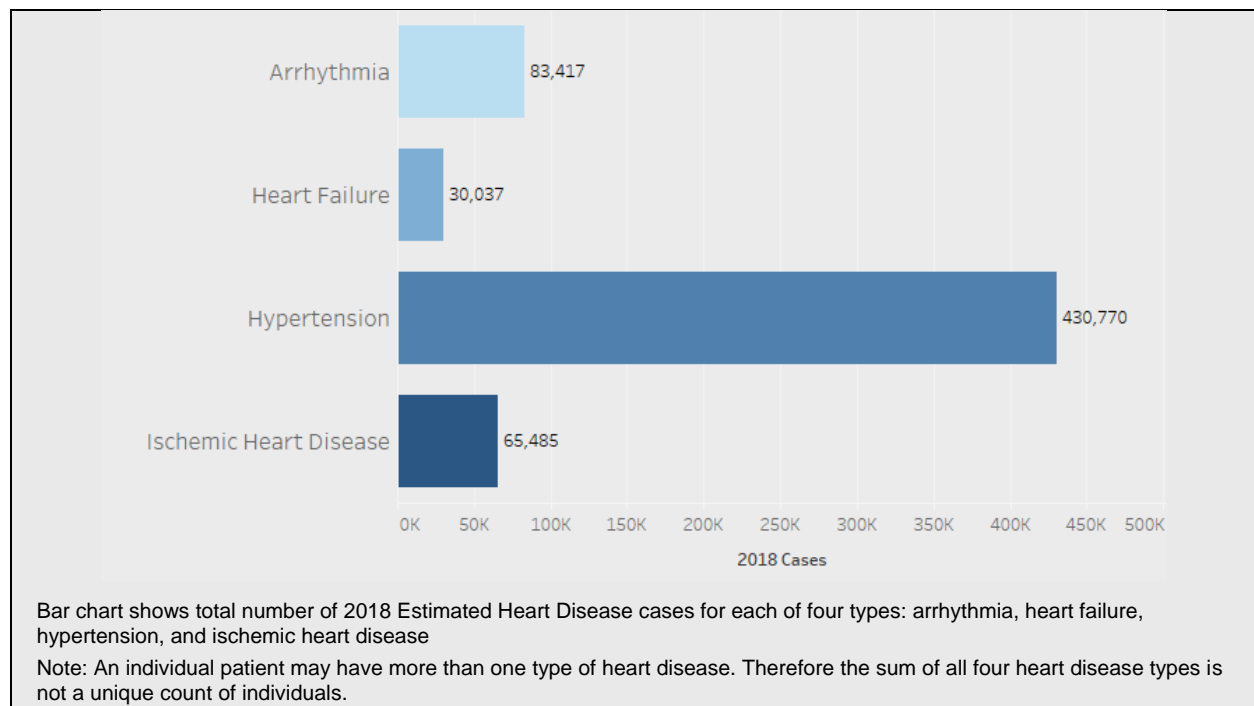
Williamson-Travis-Hays Valley Health Community		
Public Health Indicator	Category	Indicator Definition
Asthma Admission: Pediatric (Risk-Adjusted-Rate)	Preventable Hospitalizations	2016 Number Observed / Pediatric Population Under Age 18
Gastroenteritis Admission: Pediatric (Risk-Adjusted-Rate)	Preventable Hospitalizations	2016 Number Observed / Pediatric Population Under Age 18
Accidental poisoning deaths where opioids were involved	Mental Health Conditions/Diseases	Annual Estimates of Accidental Poisoning Deaths where Opioids Were Involved Among Resident Population: April 1, 2010 to July 1, 2017.
Ratio of Population to One Dentist	Access To Care	2016 Ratio of Population to Dentists
Intentional Self-Harm; Suicide	Mental Health Conditions/Diseases	2015 Intentional Self-Harm (Suicide) (X60-X84, Y87.0)
Ratio of Population to One Primary Care Physician	Access To Care	2015 Ratio of Population to Primary Care Providers
Ratio of Population to One Non-Physician Primary Care Provider	Access To Care	2017 Ratio of Population to Primary Care Providers Other than Physicians
Sexually Transmitted Infection Incidence	Health Behaviors	2015 Number of Newly Diagnosed Chlamydia Cases per 100,000 Population
Long Commute Alone	Environment	2012-2016 Among Workers Who Commute in Their Car Alone, the Percentage that Commute More than 30 Minutes
Civilian veteran population 18+	Population	2012 Percent of population 18 years and over - Civilian veterans
Renter-occupied housing	Environment	2017 Renter-occupied housing (percent of households)
Air Pollution - Particulate Matter daily density	Environment	2012 Average Daily Density of Fine Particulate Matter in Micrograms per Cubic Meter (PM2.5)
HIV Prevalence	Conditions/Diseases	2015 Number of Persons Aged 13 Years and Older Living with a Diagnosis of Human Immunodeficiency Virus (HIV) Infection per 100,000 Population
Severe Housing Problems	Environment	2010-2014 Percentage of Households with at Least 1 of 4 Housing Problems: Overcrowding, High Housing Costs, or Lack of Kitchen or Plumbing Facilities
Motor Vehicle Driving Deaths with Alcohol Involvement	Health Behaviors	2012-2016 Percentage of Motor Vehicle Crash Deaths that had Alcohol Involvement
Perforated Appendix Admission: Pediatric (Risk-Adjusted-Rate for Appendicitis)	Preventable Hospitalizations	2016 Number Observed / Pediatric Population Under Age 18
Drug Poisoning Deaths Rate	Health Behaviors	2014-2016 Number of Drug Poisoning Deaths (Drug Overdose Deaths) per 100,000 Population

Williamson-Travis-Hays Valley Health Community		
Public Health Indicator	Category	Indicator Definition
Perforated Appendix Admission: Adult (Risk-Adjusted-Rate per 100 Admissions for Appendicitis)	Preventable Hospitalizations	2016 Number Observed / Adult Population Age 18 and older
Urinary Tract Infection Admission: Pediatric (Risk-Adjusted-Rate)	Preventable Hospitalizations	2016 Number Observed / Pediatric Population Under Age 18
Social/Membership Associations	Population	2015 Number of Membership Associations per 10,000 Population
Adults Engaging in Binge Drinking During the Past 30 Days	Health Behaviors	2016 Percentage of a County's Adult Population that Reports Binge or Heavy Drinking in the Past 30 Days

## Appendix E: Watson Health Community Data

Watson Health Heart Disease Estimates identified hypertension as the most prevalent heart disease diagnoses; there were over 430,000 estimated cases in the community overall. Leander-Cedar Park ZIP codes had the most estimated cases of each heart disease type, driven by population size. However, despite fewer number of cases, the ZIP codes in Sun City had the highest estimated prevalence rates for Arrhythmia (1,166 cases per 10,000 population), Heart Failure (443 cases per 10,000 population), Hypertension (3,883 cases per 10,000 population), and Ischemic Heart Disease (995 cases per 10,000 population).

2018 Estimated Heart Disease Cases

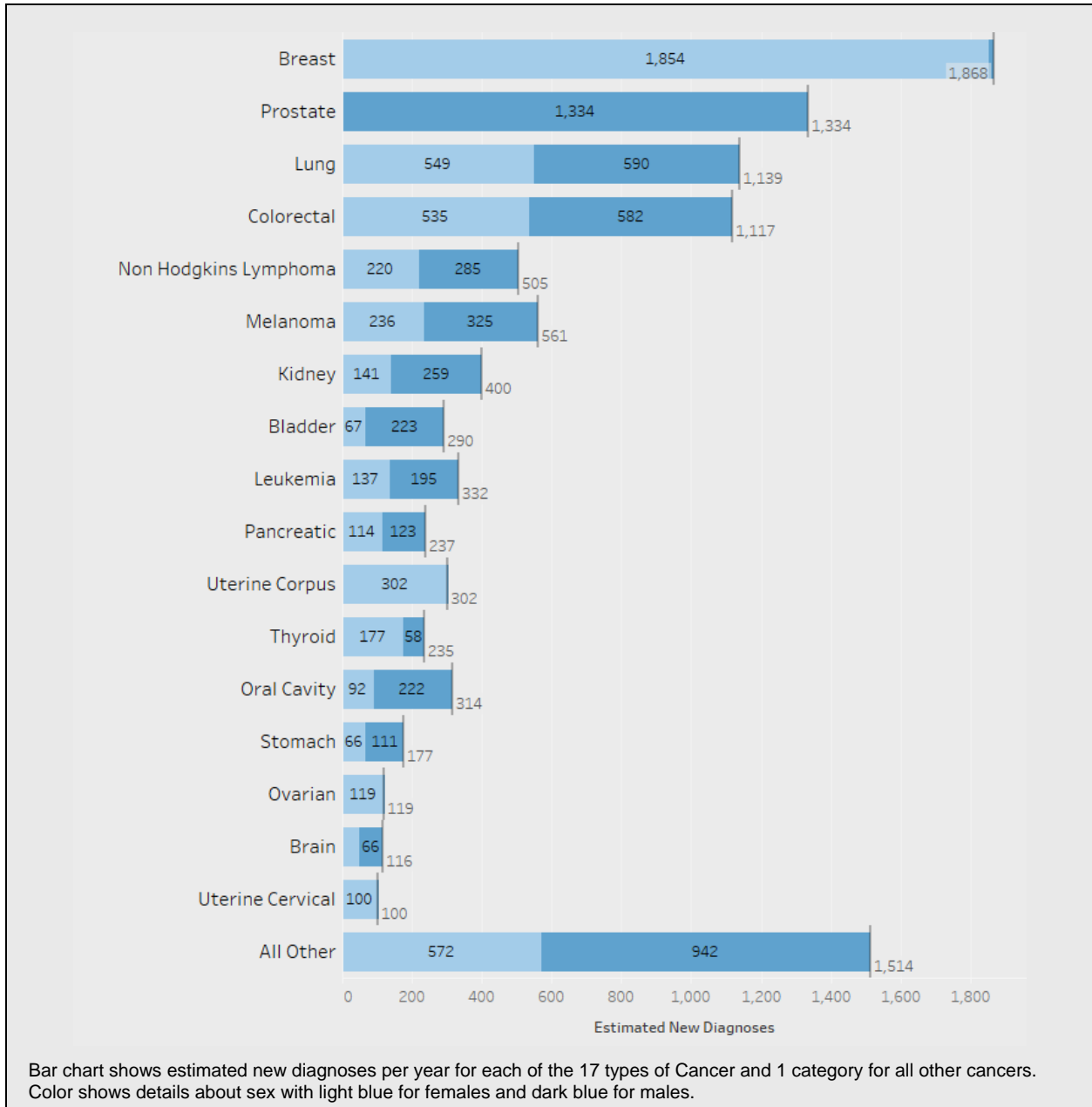


Source: IBM Watson Health, 2018

For this community, Watson Health’s 2018 Cancer Estimates revealed the cancers projected to grow the fastest in next 5 years were pancreatic and bladder. Most new cancer cases in 2018 were estimated to be breast, prostate, lung cancers and colorectal.



### 2018 Estimated New Cancer Cases



Source: IBM Watson Health, 2018

*Estimated Cancer Cases and Projected 5 Year Change by Type*

Cancer Type	2018 Estimated New Cases	2023 Estimated New Cases	5 Year Growth (%)
Bladder	290	360	24.3%
Brain	116	134	15.0%
Breast	1,868	2,228	19.3%
Colorectal	1,117	1,197	7.2%
Kidney	400	488	21.9%
Leukemia	332	400	20.4%
Lung	1,139	1,368	20.1%
Melanoma	561	684	21.9%
Non-Hodgkin's Lymphoma	505	611	20.9%
Oral Cavity	314	383	22.0%
Ovarian	119	139	17.4%
Pancreatic	237	298	25.9%
Prostate	1,334	1,518	13.8%
Stomach	177	210	18.7%
Thyroid	235	285	21.3%
Uterine Cervical	100	110	9.3%
Uterine Corpus	302	368	21.9%
All Other	1,514	1,834	21.1%
Grand Total	10,661	12,616	18.3%

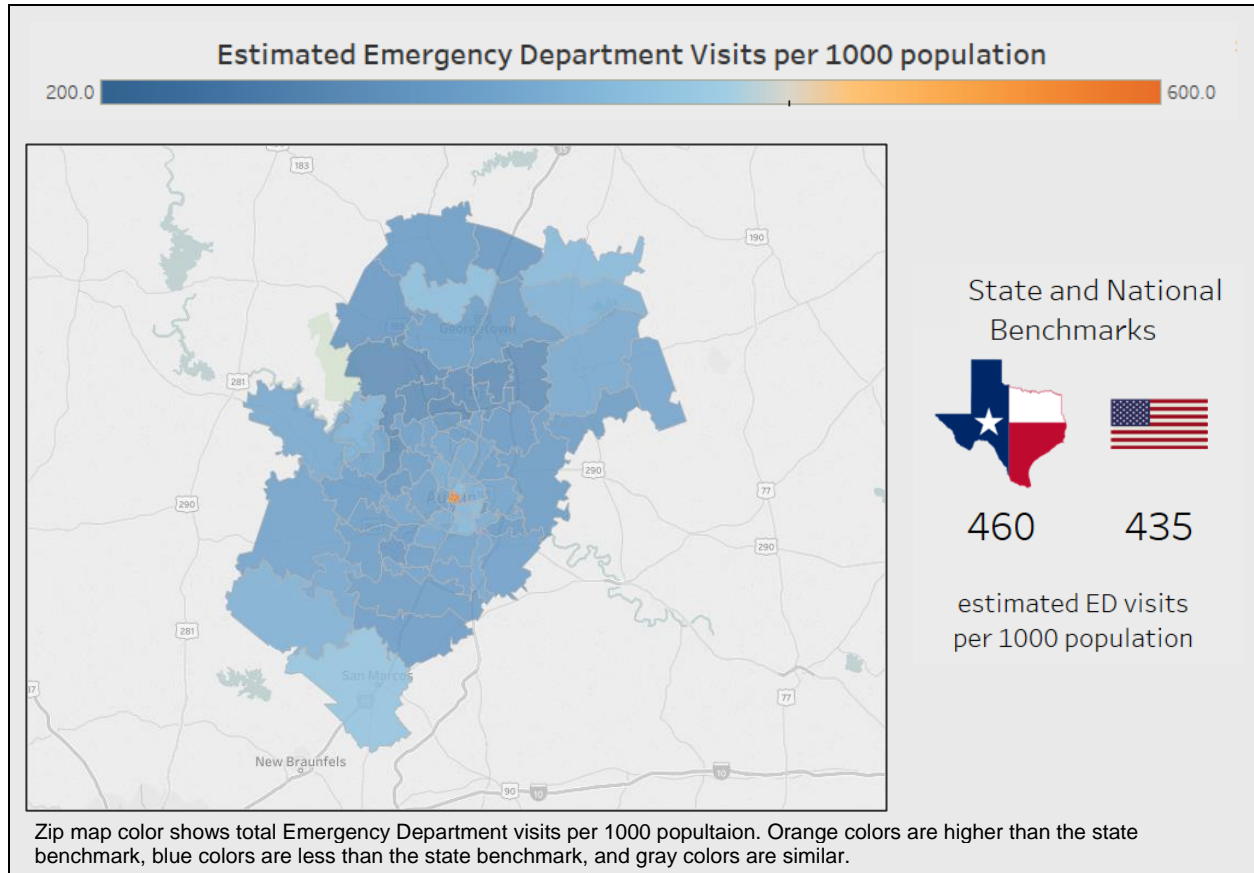
Source: IBM Watson Health, 2018

Based on population characteristics and regional utilization rates, Watson Health projected all emergency department (ED) visits in this community to increase by 10% over the next 5 years. The highest estimated ED use rates were in the ZIP codes of University of Texas; 555.3 to 591.5 ED visits per 1,000 residents compared to the Texas state benchmark of 460 visits and the U.S. benchmark of 435 visits per 1,000.

These ED visits consist of three main types: those resulting in an inpatient admission, emergent outpatient treated and released ED visits, and non-emergent outpatient ED visits that were lower acuity. Non-emergent ED visits present to the ED but can be treated in other more appropriate and less intensive outpatient settings.

Non-emergent outpatient ED visits can be an indication of systematic issues within the community regarding access to primary care, managing chronic conditions, or other access to care issues such as ability to pay. Watson Health estimated non-emergent ED visits to increase by a total of 5.6% over the next 5 years in this community.

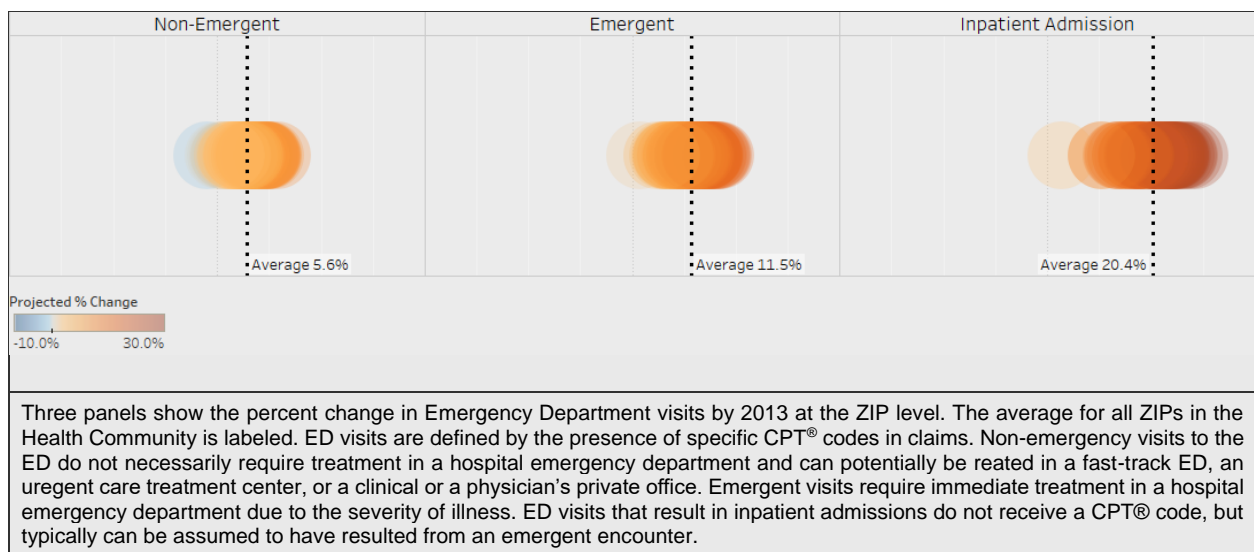
### Estimated 2018 Emergency Department Visit Rate



Note: These are not actual BSWH ED visit rates. These are statistical estimates of ED visits for the population.

Source: IBM Watson Health, 2018

### Projected 5 Year Change in Emergency Department Visits by Type and ZIP Code



Note: These are not actual BSWH ED visit rates. These are statistical estimates of ED visits for the population.

Source: IBM Watson Health, 2018

## **Appendix F: Evaluation of Prior Implementation Strategy Impact**

---

### *Evaluation of Prior CHNA Implementation*

---

Total Resources contributed to Addressing Community Needs: \$30,736,784

Identified Needs Addressed: Chronic Disease Management and Prevention

<b>Program Name: CLINIC: HealthSpeak for Adults and Children</b>
<b>Description:</b> HealthSpeak for Adults and Children are adult and child-focused public educational series, allows providers to build relationships with parents and local community while educating on a topic that is in the provider's area of expertise. This valuable & helpful information assists in equipping parents through the child rearing years. Baylor Scott & White Health offers free and/or reduced cost health screenings to community members on a walk-in basis geared towards enhancing the well-being of individuals in the community.
<b>Impact/Outcomes:</b> 389 Persons Served
<b>Supported by:</b> Baylor Scott & White Medical Center – Round Rock, Lakeway, Cedar Park,
<b>Resources Contributed:</b> Staff time and resources valued at \$28,081 of Community Benefit

<b>Program Name: It's A Guy Thing</b>
<b>Description:</b> Regular health exams and tests can help find problems before they start. They also can help find problems early, when the chances for treatment and cure are better. Through It's A Guy Thing, the Hospitals provide health services, screenings, and treatments, assisting men in taking steps that help their chances for living a longer, healthier life and preventing the onset of some chronic conditions. This annual event for men focusing on proactive health care including preventive health screenings, seminars and healthy lifestyle information.
<b>Impact/Outcomes:</b> 300+ men received individual screenings and services
<b>Supported by:</b> Baylor Scott & White Medical Center – Round Rock
<b>Resources Contributed:</b> Staff time and materials valued at \$22,846 of Community Benefit

<b>Program Name: For Women For Life</b>
<b>Description:</b> Regular health exams and tests can help find problems before they start. They also can help find problems early, when the chances for treatment and cure are better. Through For Women For Life the Hospital provides health services, screenings, and treatments, assisting women in taking steps that help their chances for living a longer, healthier life. This annual event for women focusing on proactive health care including preventive health screenings, seminars and healthy lifestyle information.
<b>Impact/Outcomes:</b> 213 Persons Served
<b>Supported by:</b> Baylor Scott & White Medical Center – Round Rock
<b>Resources Contributed:</b> Staff time and materials valued at \$21,220 of Community Benefit

**Program Name: Community Health Education and Seminars**

**Description:** Baylor Scott & White Health consistently looks for opportunities to educate the community on health issues to support our mission and vision. The programs and services that fall into this category extend beyond patient care activities and include services directed to both individuals, civic organizations such as the Round Rock Kiwanis and Rotarians, and larger populations in the community. They include such things as educational information about preventive health care, lectures, or presentations held by BSWH physicians and staff about health-related topics like understanding various conditions and diseases, when to seek treatment, and the treatment options available.

**Impact/Outcomes:** 17,037 Persons Served

**Supported by:** Baylor Scott & White Medical Center – Round Rock

**Resources Contributed:** Staff time and materials valued at \$115,858 of Community Benefit

**Program Name: Health Screenings and Drive Thru Flu Clinics**

**Description:** Baylor Scott & White Health offers screenings throughout the year to assist in the prevention and early identification of potential disease states. Some screenings are provided on a one-time basis or as a special event in the community and are available to those who are under insured, medically underserved or for the broader community. Annual Drive Thru Flu Clinic to provide easy access to vaccinations for the entire community.

**Impact/Outcomes:** 8,735 Persons Served

**Supported by:** Baylor Scott & White Medical Center – Round Rock

**Resources Contributed:** Staff time and materials valued at \$101,389 Community Benefit

**Program Name: School-Based Community Health Education, Expos & Events**

**Description:** BSWH recognizes the importance of teaching about health and health professions to students in our school systems. Programs and services in this category are geared towards students K-12 and provide educational opportunities for students in the local ISD's to learn about the importance of making healthy living choices starting at an early age. School health expos are hosted by respective ISDs for its teachers, staff and employees while school health fairs are hosted by the ISDs for teachers, staff, employees, students and their families. Offered during In-Service Training days or PTA events, educational material is distributed and offered while the following screenings are conducted (dependent upon provider availability and expo size): Blood Pressure; Posture and Grip Strength screenings as well as Auricular and Massage Therapy. \*At events with younger students, Plinko (game) offered with health-related questions.

**Impact/Outcomes:** 12,939 Persons Served

**Supported by:** Baylor Scott & White Medical Center – Round Rock

**Resources Contributed:** Staff time and materials valued at \$30,910 of Community Benefit

**Program Name: Por Tu Familia**

**Description:** Presented by Baylor Scott & White, Por tu Familia, or “for your family”, is the signature comprehensive diabetes prevention and management program of the American Diabetes Association’s Latino initiatives. It is a comprehensive program developed for and targeted to Latinos. It is geared towards people who have been diagnosed with diabetes or pre-diabetes, caregivers of people with diabetes, as well as anyone who believes they might be at risk.

Diabetes is an urgent health problem in the Latino community as their rates of diabetes are almost double those of non-Latino whites. Getting information to the community about the seriousness of diabetes, its risk factors and those who may be at risk and ways to help manage the disease is essential. According to the American Diabetes Association, many Latinos feel guilty spending time and money on personal health and feel selfish putting their own health care ahead of their families’ needs, when in truth, the opposite should be true.

**Impact/Outcomes:** 14 Persons Served

**Supported by:** Baylor Scott & White Medical Center – Round Rock

**Resources Contributed:** Staff time and materials valued at \$5,611 of Community Benefit (\$5K Donation)

**Program Name: Educational Seminars and Health Profession Medical Education**

**Description:** Educational lecture series given by BSWH providers on various health conditions such as helping community members identify signs, risk factors, symptoms of stroke and what actions to take to improve the health of community members in addition to providing opportunities for further education and training of health professionals including but not limited to BS&W employees.

**Impact/Outcomes:** 3747 Persons Served

**Supported by:** Baylor Scott & White Medical Center – Lakeway, Round Rock

**Resources Contributed:** Staff time and materials valued at \$13,863 of Community Benefit

**Program Name: Community Health Fairs/Employee Health Expos**

**Description:** BS&W regularly participates in health fairs all over the communities we serve in order to provide access to educational materials that will help impact healthy lifestyle habits. Employee health expos are hosted by respective employers for their employees to provide them with screenings and helpful information. Educational material is distributed and offered. In addition, the following screenings are conducted (dependent upon provider availability and expo size): Blood Pressure; Posture and Grip Strength screenings as well as Auricular and Massage Therapy.

**Impact/Outcomes:** 52,851 Persons Served

**Supported by:** Baylor Scott & White Medical Center – Round Rock, Scott & White Clinic, Baylor Scott & White Medical Center - Taylor

**Resources Contributed:** Staff time and materials valued at \$164,463 of Community Benefit

**Program Name: Community Outreach and Wellness Programs**

**Description:** Educational outreach and other efforts done both in unit and out in the community targeting obesity and related chronic conditions to include Baylor Scott & White Health offering free and reduced cost services and programs geared towards enhancing well-being of individuals in the community.

**Impact/Outcomes:** 14,177 Persons Served

**Supported by:** Baylor Scott & White Medical Centers – Round Rock, Lakeway, Cedar Park and Taylor

**Resources Contributed:** Staff time and materials valued at \$139,837 of Community Benefit

**Program Name: Donation: Health Improvement**

**Description:** BSWH donates funds often to local charitable, not for profit organizations whose efforts to improve community health align with the identified health needs in our community. We do so to support their efforts to improve the overall health of the community through education, prevention, health advocacy, or disease management education. Funds that go to improving the health infrastructure of our community are counted after subtracting the fair market value of participation by employees or the organization.

**Impact/Outcomes:** 11,379 Persons Served

**Supported by:** Baylor Scott & White Medical Center – Round Rock

**Resources Contributed:** Staff time and materials valued at \$383,782 of Community Benefit

**Program Name: FIA: Second Life Resources**

**Description:** In collaboration with other not-for-profit organizations, FIAI's Second Life Resources program has stretched medical resources and expertise to communities across the state of Texas which are underserved or in need due to natural disaster or economic and government-imposed burdens.

**Impact/Outcomes:** 170 persons served receiving medical supplies and other resource aids on behalf of faith-based organizations and local community not-for-profits.

**Resources Contributed:** Staff time and materials valued at \$35,115 of Community Benefit

**Program Name: FIA: Second Life Resources International**

**Description:** In collaboration with other not-for-profit organizations, FIAI's Second Life Resources program has stretched medical resources and expertise to regions around the globe which are underserved or in need due to natural disaster or economic and government-imposed burdens.

**Impact/Outcomes:** 500 persons served receiving medical supplies and other resource aids on behalf of international faith-based organizations and not-for-profits.

**Resources Contributed:** Staff time and materials valued at \$35,570 of Community Benefit

**Program Name: SUPPORT GROUPS**

**Description:** Baylor Scott & White Health provides support group services for patients and their families that are specific to a disease or social concern.

**Impact/Outcomes:** 761 Persons Served

**Supported by:** Baylor Scott & White Medical Center – Round Rock and Baylor Scott & White Medical Center - Taylor

**Resources Contributed:** Staff time and materials valued at \$13,383 of Community Benefit



## Identified Need Addressed: Cancer

<b>Program Name: Round Rock Cancer Center</b>
<b>Program Description:</b> To better serve the community and meet broad spectrum of necessary services offering enhanced treatment and cancer diagnostic services, screenings, diagnosis, treatment, and long-term monitoring for comprehensive cancer care.
<b>Impact:</b> To address the need for a comprehensive cancer program in Travis and Williamson counties. Treating 140 people a day since February 2017
<b>Supported by:</b> Baylor Scott & White Medical Center – Round Rock
<b>Committed Resources:</b> \$29,000,000

<b>Program Name: Community Health Education - Cancer</b>
<b>Description:</b> BSWH supplies information on breast health to organizations and at events across the community. Information includes proper screening guidelines and how to access services to reduce the incidence of late stage cancer going undetected.
<b>Impact/Outcomes:</b> 70 Persons Served
<b>Supported by:</b> Baylor Scott & White Medical Center – Round Rock
<b>Resources Contributed:</b> Staff time and materials valued at \$623 of Community Benefit

<b>Program Name: Walk-In Mammography Screening</b>
<b>Program Description:</b> BSWH held walk-in mammography screenings at BSW Medical Center - Taylor. No appointments were necessary. Insurance coverage applied.
<b>Impact:</b> 12 women screened in 2017
<b>Supported by:</b> Baylor Scott & White Medical Center – Taylor
<b>Committed Resources:</b> \$905

## Identified Need Addressed: Primary Care Access

<b>Program Name: Lone Star Circle of Care</b>
<b>Program Description:</b> Baylor Scott & White Medical Center - Taylor Hospital provides facility space to operate Lone Star Circle of Care to care for indigent patients.
<b>Impact:</b> 11,700 uninsured members of the community received care. (including 1,200 medically indigent each year)
<b>Supported by:</b> Baylor Scott & White Medical Center - Taylor
<b>Resources Contributed:</b> Value of facility space provided in kind = \$219,144 over 3 years (\$73,048 annually)

<b>Program Name: Teddy Bear Clinic</b>
<b>Description:</b> Teddy Bear Clinics are an opportunity for providers to build relationships with the parents and community while helping to remove the fear of, and acquaint the children with, the idea of going to the doctor. Supplies we use: Teddy Bear Clinic Check-Up Form; Stethoscope; Thermometer; Tongue depressors; Coban; Band-Aids.
<b>Impact/Outcomes:</b> 1,719 Persons Served
<b>Supported by:</b> Baylor Scott & White Medical Center – Round Rock, Baylor Scott & White Medical Center - Taylor and Scott & White Clinic
<b>Resources Contributed:</b> Staff time and resources valued at \$16,294 of Community Benefit

<b>Program Name: Medical Education</b>
<b>Program Description:</b> BSWMC-Taylor provides opportunities for further education and training of health professionals including but not limited to BS&W employees.
<b>Impact/Outcomes:</b> 18 nurse practitioners in training completed preceptorship
<b>Supported by:</b> Baylor Scott & White Medical Center – Taylor
<b>Committed Resources:</b> \$7,523 and supervision of nurse practitioner

## Identified Need Addressed: Mental Health

<b>Program Name: SUPPORT GROUPS</b>
<b>Description:</b> Baylor Scott & White Health provides support group services for patients and their families that are specific to a disease or social concern.
<b>Impact/Outcomes:</b> 761 Persons Served
<b>Supported by:</b> Baylor Scott & White Medical Center – Round Rock and Baylor Scott & White Medical Center - Taylor
<b>Resources Contributed:</b> Staff time and materials valued at \$13,383 of Community Benefit

<b>Program Name: Hiring New Physicians and Providers</b>
<b>Program Description:</b> Baylor Scott & White Medical Center - Round Rock and Baylor Scott & White Medical Center - Taylor intend to increase access to care by increasing the number of providers (physicians and therapists) specializing in treating mental health conditions in the next 3 years as well as up to 4 new Psychotherapists to help expand psychotherapy services.
<b>Anticipated Impact:</b> Shorter wait times for patients to see providers.
<b>Supported by:</b> Baylor Scott & White Medical Center - Taylor and Baylor Scott & White Medical Center - Round Rock
<b>Metrics:</b> <ul style="list-style-type: none"><li>• Amount of time from referral to patient appointment</li><li>• % of patients age 18 and older with a diagnosis of major depressive disorder (MDD) with a suicide risk assessment completed during the visit in which a new diagnosis or recurrent episode was identified.</li></ul>

- # of patients age 18 and older with diagnosis of major depression or dysthymia who have a PHQ-9 tool administered at least once during a 4-month period in which there was a qualifying visit

**Committed Resources: Approximately \$350,000 in provider salaries**

**Program Name: Lakeway: Community Talks**

**Description:** Community events and speaking engagements that BSWMC-Lakeway providers or staff participate in.

**Impact/Outcomes:** 53 Persons Served

**Supported by:** Baylor Scott & White Medical Center – Lakeway

**Resources Contributed:** Staff time and materials valued at \$563 of Community Benefit

**Program Name: Walk With A Doc**

**Description:** BS&W hosts monthly walk sessions at San Gabriel Park. Community members are invited to join a provider for a 2-mile walk and brief health lecture.

**Impact/Outcomes:** 1,179 Persons Served

**Supported by:** Baylor Scott & White Medical Center – Round Rock

**Resources Contributed:** Staff time and materials valued at \$16,421 of Community Benefit

**Program Name: Self-Care Education**

**Program Description:** Baylor Scott & White Medical Center – Round Rock recognizes the need for community health education on the basics of mental health and counseling services, and working with community organizations and at public events, can provide important resources that individuals may take advantage of to assist in developing better coping skills and maintaining overall wellness. These integrative medicine services exist to treat the patient holistically and can be utilized alongside conventional mental health treatment.

These programs include: Tai Chi, Yoga, Acupuncture, Massage Therapy, "Mindfulness" presentations to reduce stress, Stress awareness presentations as part of HealthSpeak Education Series, HeartMath biofeedback evaluations at health fairs/community events, Use of pet therapy animals in hospitals and clinics

**Impact:** Participants developed a better understanding of how to manage and address self-care needs, including relaxation, stress management skills and overall wellness. These and future integrative medicine services supply patients and providers with additional options in order to offer comprehensive care to the community.

**Supported by:** Baylor Scott & White Medical Center – Round Rock

**Committed Resources:**

Community Events – 25 hours of staff time

One full-time massage therapist

One full-time acupuncturist

One PRN yoga instructor

One full-time therapist